

TOOLS REQUIRED:

LEVEL, SQUARE, CORELESS DRILL
PHILLIPS SCREWDRIVER, 9/64" DRILL BIT, 8-32 TAP
CAULKING GUN, SEALANT OR CAULKING

PASS THROUGH INSTALLATION INSTRUCTIONS

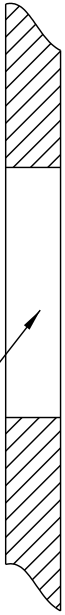
FLUSH TO ONE SIDE INSTALLATION

NOTE: THESE ARE RECOMMENDED PASS THROUGH INSTALLATION INSTRUCTIONS (TRIMS ARE FULLY WELDED AND POLISHED ON BOTH SIDES TO ACCOMMODATE ANY TYPE OF INSTALLATION)

"CLEAN SIDE"

"DIRTY SIDE"

STEP #1
PREPARE THE WALL OPENING SO IT IS 1/2" LARGER IN WIDTH AND 1/2" LARGER IN HEIGHT THAN THE O.D. OF THE PASS THROUGH. CUTOUT MUST BE LEVEL AND SQUARE



8-32 TRUSS SCREWS PROVIDED. FASTEN AROUND TOP, BOTTOM, AND BOTH SIDES

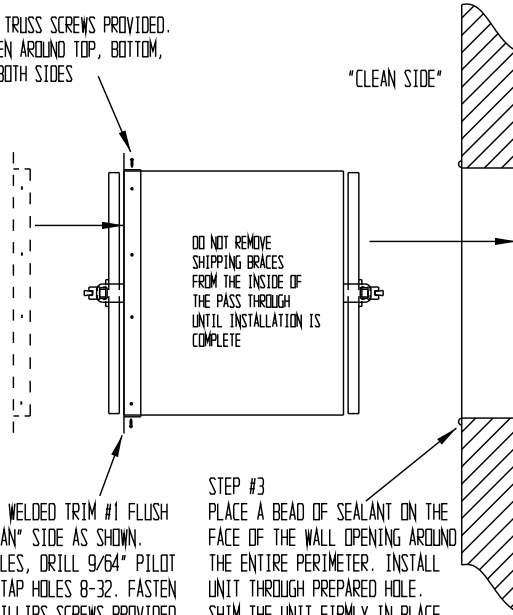
"CLEAN SIDE"

"DIRTY SIDE"

DO NOT REMOVE SHIPPING BRACES FROM THE INSIDE OF THE PASS THROUGH UNTIL INSTALLATION IS COMPLETE

STEP #2
INSTALL WELDED TRIM #1 FLUSH ON "CLEAN" SIDE AS SHOWN. MARK HOLES, DRILL 9/64" PILOT HOLES, TAP HOLES 8-32. FASTEN WITH PHILLIPS SCREWS PROVIDED

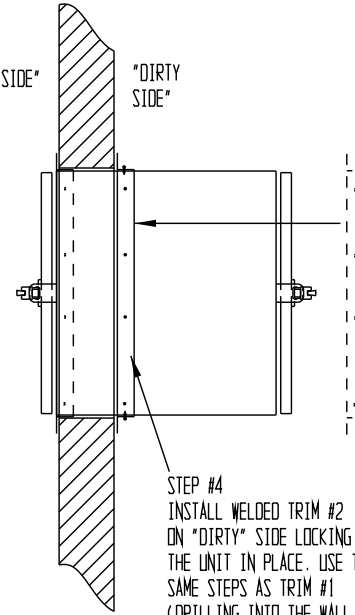
STEP #3
PLACE A BEAD OF SEALANT ON THE FACE OF THE WALL OPENING AROUND THE ENTIRE PERIMETER. INSTALL UNIT THROUGH PREPARED HOLE. SHIM THE UNIT FIRMLY IN PLACE. CONFIRM UNIT IS LEVEL.



"CLEAN SIDE"

"DIRTY SIDE"

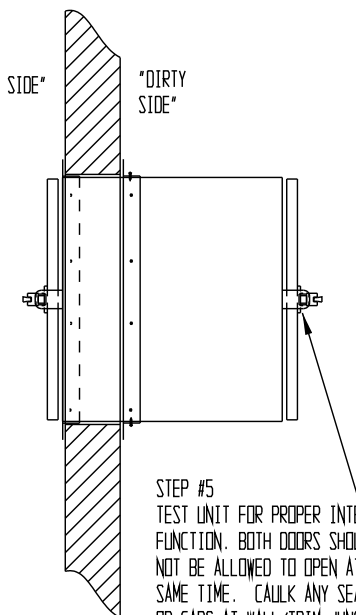
STEP #4
INSTALL WELDED TRIM #2 ON "DIRTY" SIDE LOCKING THE UNIT IN PLACE. USE THE SAME STEPS AS TRIM #1 (DRILLING INTO THE WALL IS NOT REQUIRED)



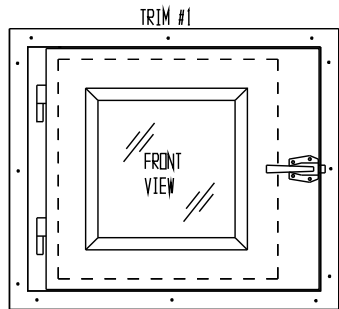
"CLEAN SIDE"

"DIRTY SIDE"

STEP #5
TEST UNIT FOR PROPER INTERLOCK FUNCTION. BOTH DOORS SHOULD NOT BE ALLOWED TO OPEN AT THE SAME TIME. CAULK ANY SEAMS OR GAPS AT WALL/TRIM JUNCTION



FLUSH TO BOTH SIDES INSTALLATION (ADDITIONAL STEPS REQUIRED)



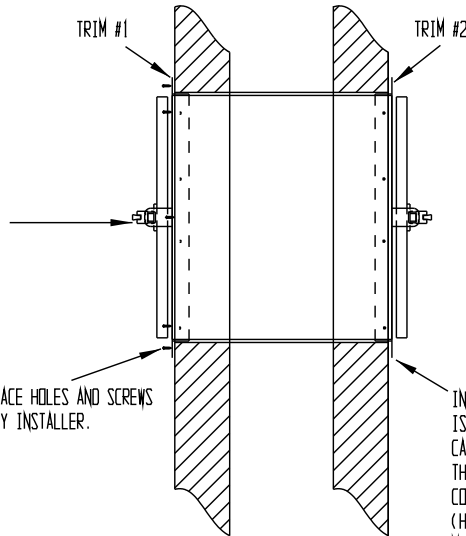
IF THE CUSTOMER REQUIRES TRIM #2 TO BE REVERSED, THEN TRIM #1 WILL NEED FACE HOLES DRILLED TO SECURE THE PASS THROUGH TO THE WALL. TRIM #2 IS THEN CAULKED IN PLACE TO COMPLETE THE INSTALL.

FACE HOLES AND SCREWS BY INSTALLER.

TRIM #1

TRIM #2

IN THIS APPLICATION TRIM #2 IS REVERSED. IT IS THEN CAULKED AND PRESSED INTO THE WALL OPENING FOR COSMETIC PURPOSES ONLY. (HOLES CAN BE DRILLED TO FACE MOUNT IF WALL IS UNEVEN)

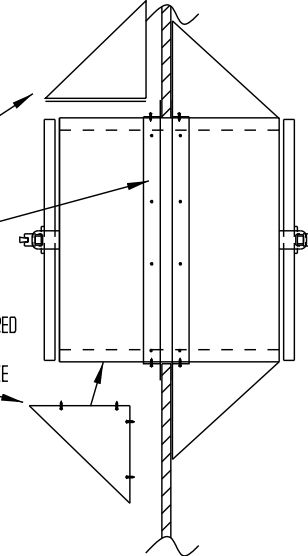


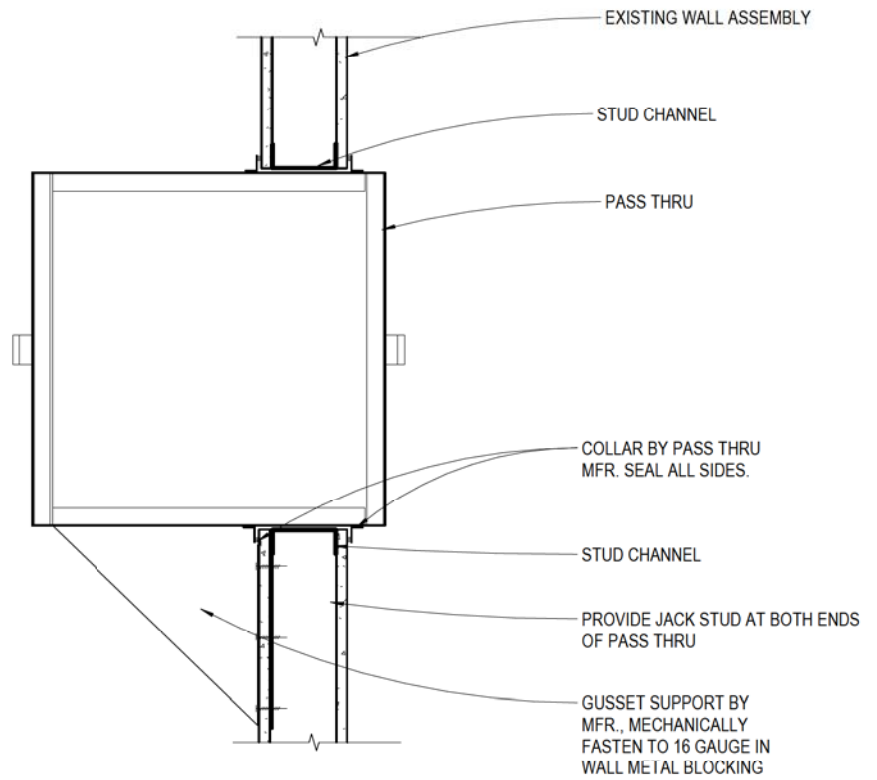
CENTERED IN WALL WITH OPTIONS INSTALLATION

SLOPED TOPS ARE AN OPTION. REMOVE THE ADHESIVE TAPE ON THE SLOPED TOP AND STICK TO THE TOP OF THE PASS THROUGH. CAULK SEAMS WHERE SLOPED TOP JOINS THE PASS THROUGH AND THE WALL.

REVERSING THE MOUNTING TRIM MAY BE REQUIRED IF THE TRIM IS LONGER THAN THE THICKNESS OF THE WALL.

ADDITION OF SUPPORT GUSSETS MAY BE REQUIRED DEPENDING ON WALL THICKNESS, WEIGHT OF MATERIALS PLACED IN THE UNIT, AND DISTANCE THE PASS THROUGH PROTRUDES THROUGH THE WALL.





A1 PASS THRU DETAIL W/ SUPPORT GUSSET

1 1/2" = 1'-0"