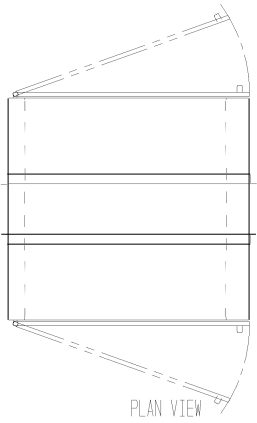
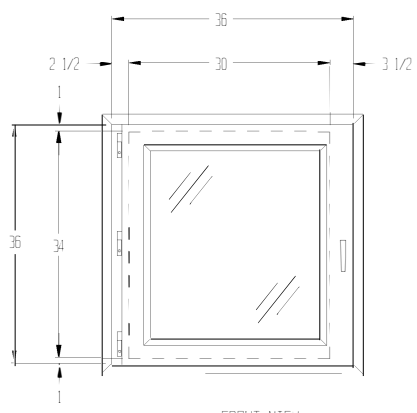


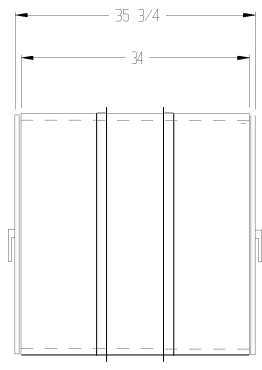
REVISIONS			
REV	DESCRIPTION	DATE	APPROVED



PLAN VIEW



FRONT VIEW



SIDE VIEW

NOTES:

- UNIT FABRICATION TO BE DOUBLE WALL, CONSTRUCTION
- UNIT TO BE CONSTRUCTED OF 16 GA. 304 STAINLESS STEEL WITH #4 FINISH.
- DOORS TO BE CONSTRUCTED OF 304 STAINLESS STEEL WITH 1/4" THK. ACRYLIC WINDOWS, BULLET HINGES AND QUARTER TURN HANDLES
- UNIT TO BE SUPPLIED WITH 1 1/2" X 1 1/2" X 16 GA. 304 STAINLESS STEEL MOUNTING ANGLE (TO BE FIELD INSTALLED)
- UNIT TO HAVE A MECHANICAL DOOR INTERLOCK SYSTEM
- ROUGH OPENING TO BE 1/2" LARGER THAN OUTSIDE DIMENSIONS OF UNIT

1) UNIT REQUIRED, AS SHOWN

DRAWN FOR		HALCO PRODUCTS COMPANY	
		100 NORTH GORDON, ELK GROVE, IL 60007-1193	
		TITLE	
		PT3034-34/SS/MI	
DRAWN BY	OK	SIZE	10342
APPROVED BY		ENG. NO.	1511742B0
		SCALE	3/4" = 1' - 0"
		DATE	1/10/02
		SHEET	