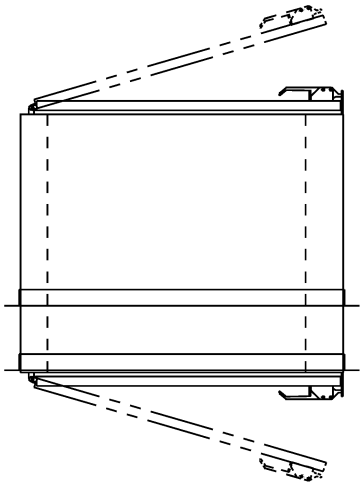
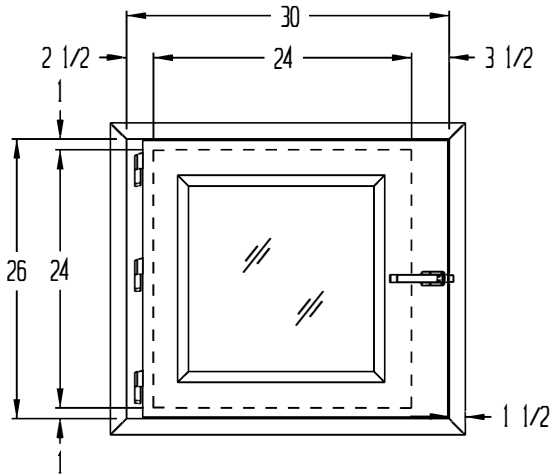


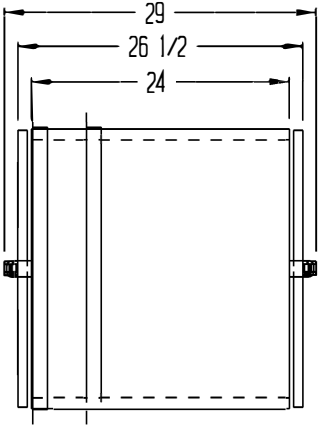
REVISIONS			
REV	DESCRIPTION	DATE	APPROVED



PLAN VIEW



FRONT VIEW



SIDE VIEW

- NOTES:
- UNIT FABRICATION TO BE DOUBLE WALL CONSTRUCTION
 - UNIT TO BE CONSTRUCTED OF 16 & 20 GA. 304 STAINLESS STEEL WITH #4 FINISH
 - DOORS TO BE CONSTRUCTED OF 16 GA. 304 STAINLESS STEEL WITH 1/4" THICK CLEAR TEMPERED GLASS GLAZING, SS PIN HINGES AND STAINLESS STEEL COMPRESSION HANDLE
 - UNIT TO BE SUPPLIED WITH 1-1/2" X 1-1/2" X 16 GA. WELDED 304 STAINLESS STEEL FINISHING TRIMS POLISHED BOTH SIDES (TO BE FIELD INSTALLED)
 - UNIT TO HAVE A MECHANICAL DOOR INTERLOCK SYSTEM
 - ROUGH OPENING TO BE 1/4" LARGER THAN OUTSIDE DIMENSIONS OF UNIT

1 UNIT REQUIRED AS SHOWN

DRAWN FOR		HALE & HALCO COMPANY, INC.		
		100 NO. GORDON STREET ELK GROVE, IL. 60007		
		TITLE PT2424-24/SS/MI		
DRAWN BY	DK	SIZE	JOB NO. 14867	DWG NO. 1521765A0
APPROVED BY		SCALE	5/8" = 1'	DATE 11/2/19
				REF 14565