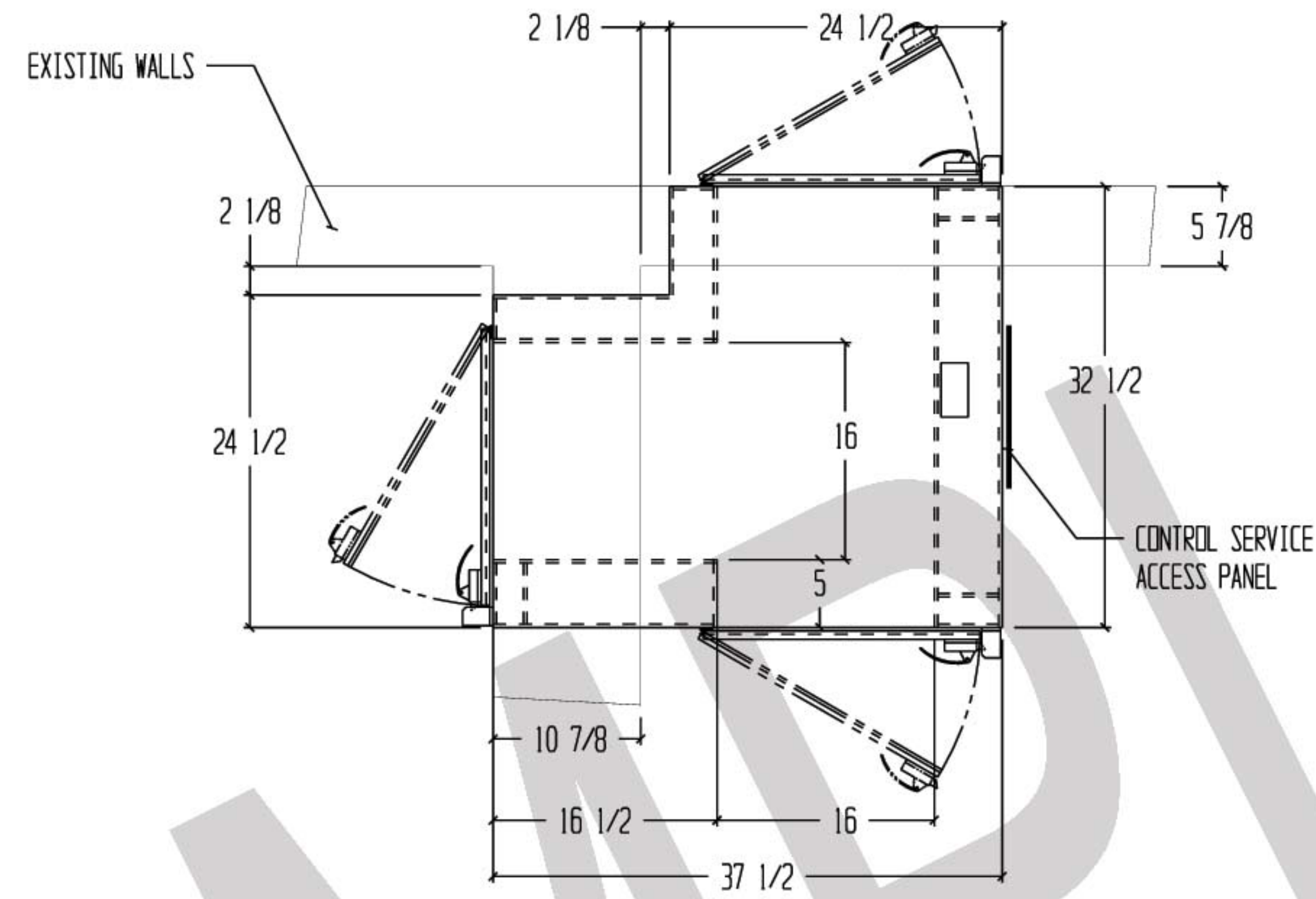
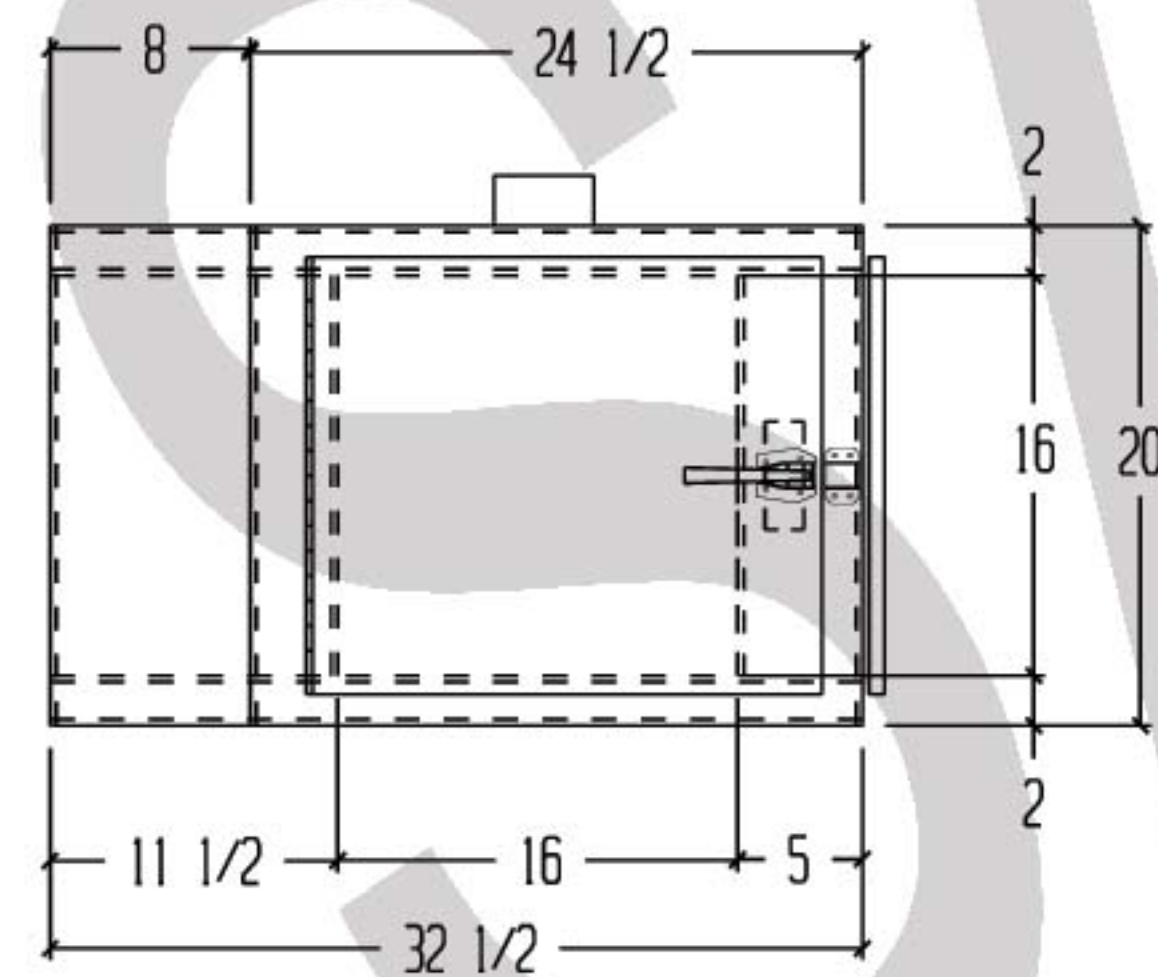


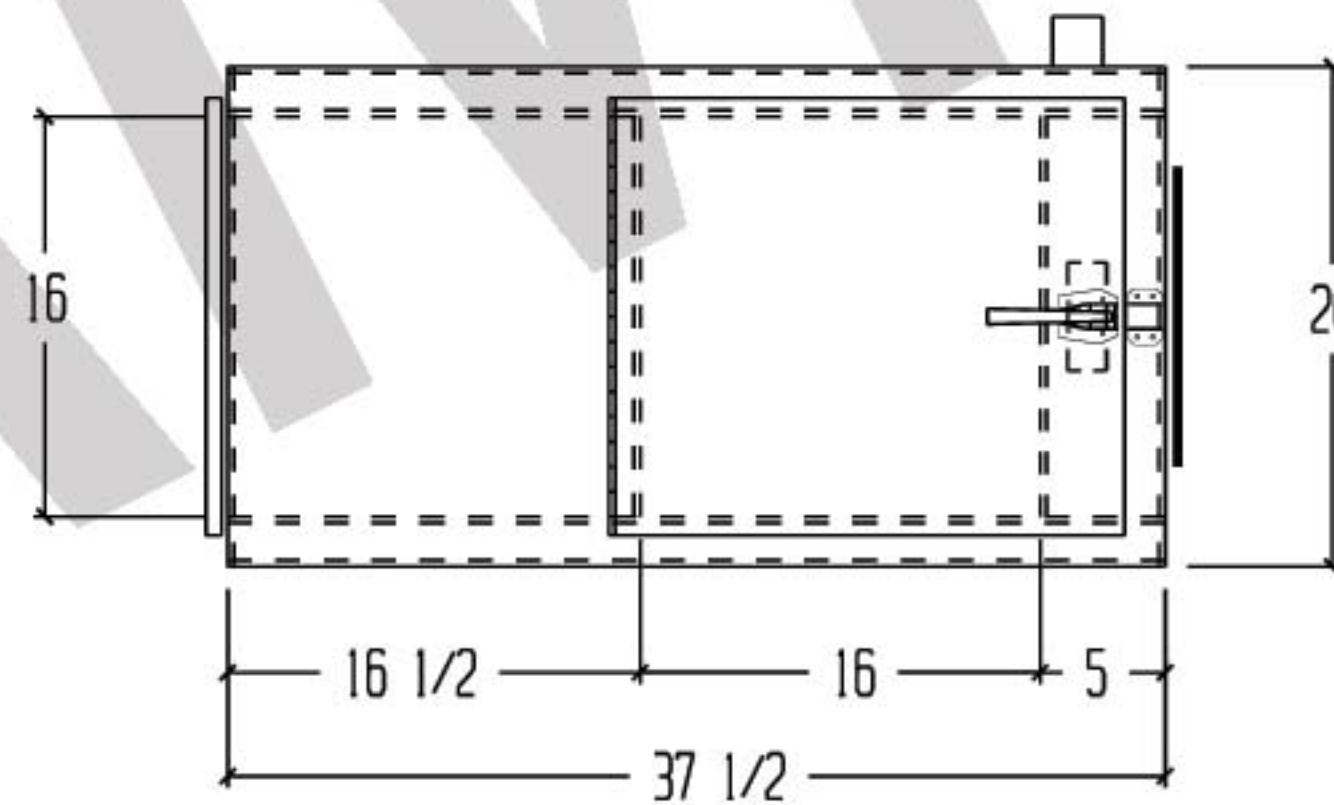
REVISIONS			
REV	DESCRIPTION	DATE	APPROVED
A	CHANGES PER CUSTOMER	5/24/10	
B	REVERSE CONFIGURATION	5/25/10	
C	ENGINEERING CHANGES	6/17/10	
D	ADDED LEAD LINERS	6/30/10	



PLAN VIEW



LEFT SIDE VIEW



FRONT VIEW

NOTES:

- UNIT FABRICATION TO BE DOUBLE WALL, CONSTRUCTION
- UNIT TO BE CONSTRUCTED OF 16 GA. 304 STAINLESS STEEL WITH #4 FINISH.
- DOORS TO BE CONSTRUCTED OF 20 GA. 304 STAINLESS STEEL WITH STAINLESS STEEL PIANO HINGES AND LATCHING HANDLE
- UNIT TO BE SUPPLIED WITH 1 1/2" X 1 1/2" X 16 GA. 304 STAINLESS STEEL MOUNTING ANGLE TO BE FIELD MOUNTED (SUPPLIED BUT NOT SHOWN)
- ROUGH OPENING TO BE 1/4" LARGER THAN OUTSIDE DIMENSIONS OF UNIT (WALL TO BE BUILT AROUND PASS THRU)
- UNIT SUPPLIED WITH FAIL SAFE ELECTRICAL INTERLOCK SYSTEM
- CUSTOMER ELECTRICAL CONNECTION: 115 VOLT, 2.0 AMPS
- UNIT WALL & DOOR CAVITIES TO BE LINED WITH 1/4" THICK LEAD PANELS FOR RADIATION SHIELDING PURPOSES

(1) UNIT REQUIRED, AS SHOWN

DRAWN FOR		HALCO PRODUCTS COMPANY 100 NORTH GORDON ST, ELK GROVE, ILLINOIS 60007		
		TITLE PT1616-34 30/SS/EI		
DRAWN BY	LVB/DK	SIZE	JOB NO.	ENG. NO.
APPROVED BY		SCALE	3/4"=1'-0"	DATE
				REV D
				SHEET