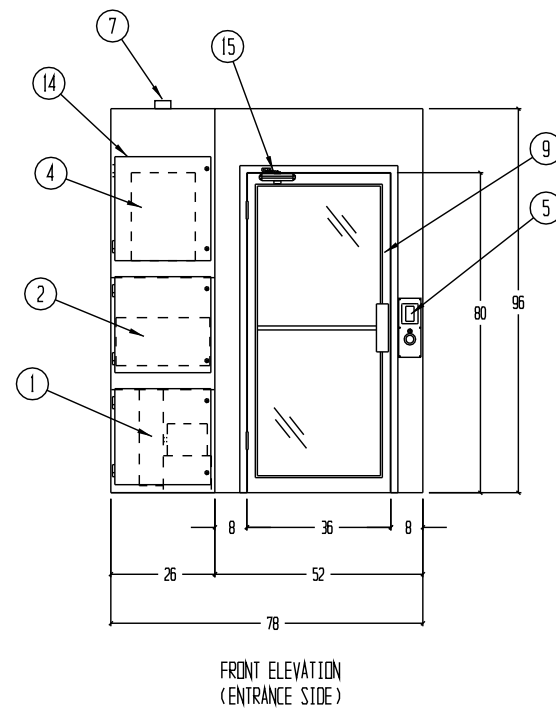
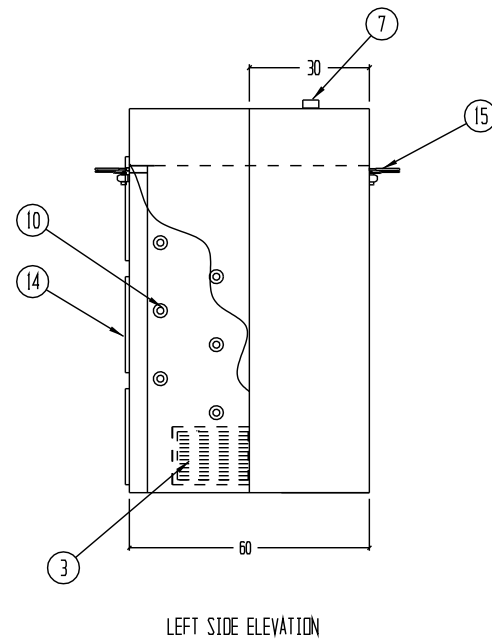
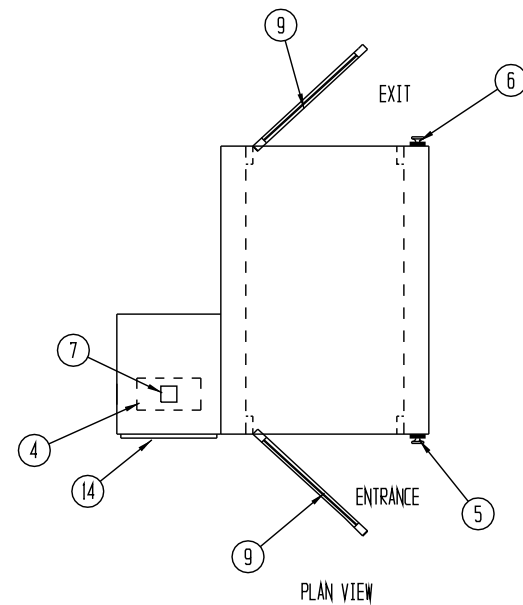
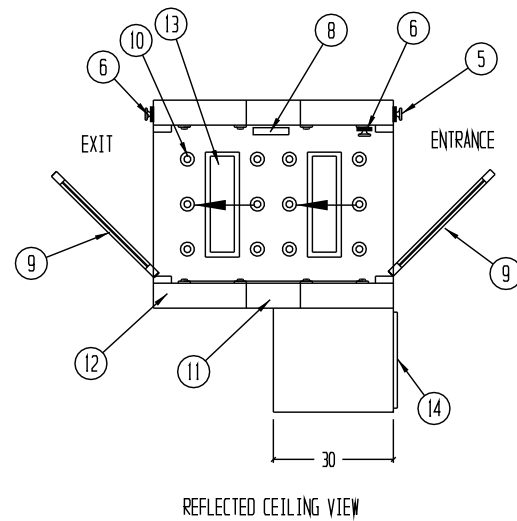


REVISIONS			
REV	DESCRIPTION	DATE	APPROVED



NOTES:

- CONSTRUCTION TO BE 16 GA WHITE EPOXY PAINTED STEEL IN & OUT
- ELECTRICAL WIRING TO CONFORM TO LATEST NEC STANDARDS
- CUSTOMER TO SUPPLY A SINGLE SOURCE, 460V /3PH /60 HZ ELECTRICAL SERVICE
- UNIT TO MEET OR EXCEED INTERNATIONAL STANDARD ISO 14644-1 FOR CLASS 5 DEVICES
- UNIT CONSTRUCTED WITH NO FLOOR
- AIR SHOWER SHIPPED IN (2) SECTIONS

- ① 1 EA. DIRECT DRIVE MOTOR/BLOWER 5 H.P. 460V/ 3PH/ 60HZ 7.6 FLA, CAPABLE OF PRODUCING 2000 CFM AT 4" S.P.
- ② 1 EA. 24 X 24 X 11 1/2 HEPA FILTER. 99.99% EFFICIENT ON PARTICLES OF 0.3 MICRONS AND LARGER
- ③ 1 EA. 36 X 12 X 1" ANODIZED ALUMINUM PRE-FILTER GRILLES WITH 35% EFFICIENT DISPOSABLE PRE-FILTERS
- ④ ELECTRONIC CONTROLS ENCLOSURE
- ⑤ PLC TOUCH SCREEN CONTROL PANEL WITH KEYPAD, AUDIBLE ALARM, LIGHT SWITCH, AND EMERGENCY STOP BUTTON
- ⑥ 2 EA. EMERGENCY STOP BUTTON (MUSHROOM TYPE)
- ⑦ ELECTRICAL JUNCTION BOX FOR CUSTOMER CONNECTION
- ⑧ PRESENCE SENSOR
- ⑨ ANODIZED ALUMINUM NARROW STILE DOORS AND FRAMES WITH 1/4" THK. ACRYLIC INSERTS
- ⑩ 40 EA. HIGH VELOCITY ADJUSTABLE PVC AIR NOZZLES
- ⑪ RETURN AIR DUCTS
- ⑫ SUPPLY AIR DUCTS
- ⑬ 2 EA. LED LIGHT FIXTURES
- ⑭ HINGED SERVICE PANELS
- ⑮ 2 EA. DOOR CLOSERS

**IMPORTANT
CUSTOMER TO CONFIRM:**

- DOOR SIZES AND DIRECTION OF SWING
- ENTRANCE AND EXIT SIDES AND DIRECTION OF OPERATION
- SERVICE ACCESS PANEL LOCATION AND SWING
- AVAILABILITY OF ELECTRICAL SERVICE REQUIRED
- ELECTRICAL SERVICE CONNECTION POINT
- OVERALL SIZE OF UNIT
- CLEAR DOOR OPENINGS OF NO LESS THAN 53" WIDE FROM UNLOADING SITE TO INSTALLATION SITE

(1) UNIT REQUIRED, AS SHOWN

DRAWN FOR		HALE & HALCO COMPANY 100 NO. GORDON STREET ELK GROVE, IL. 60007			
		TITLE AS357-ST/PLC/NF/SM			
DRAWN BY	DK	SIZE	JOB NO. -----	DWG NO.	SD072517A
APPROVED BY		SCALE	1/4"=1'-0"	DATE	7/25/17
				SHEET	