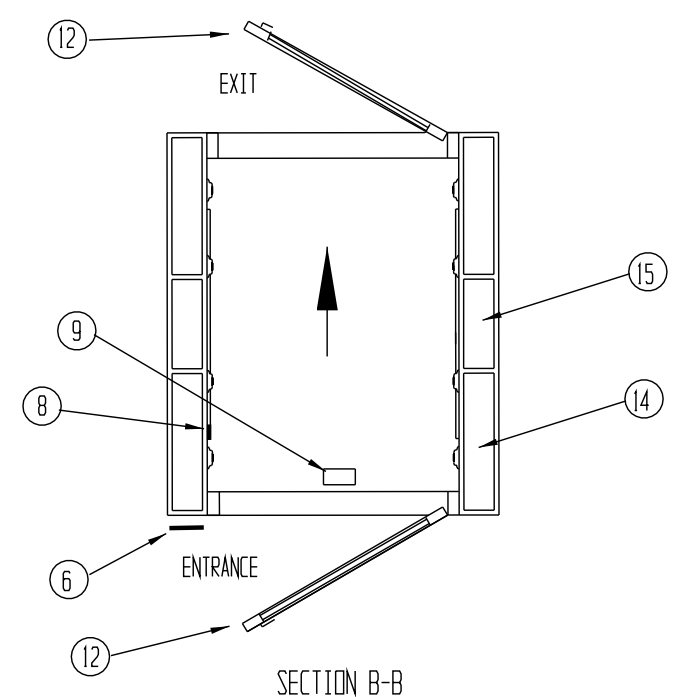
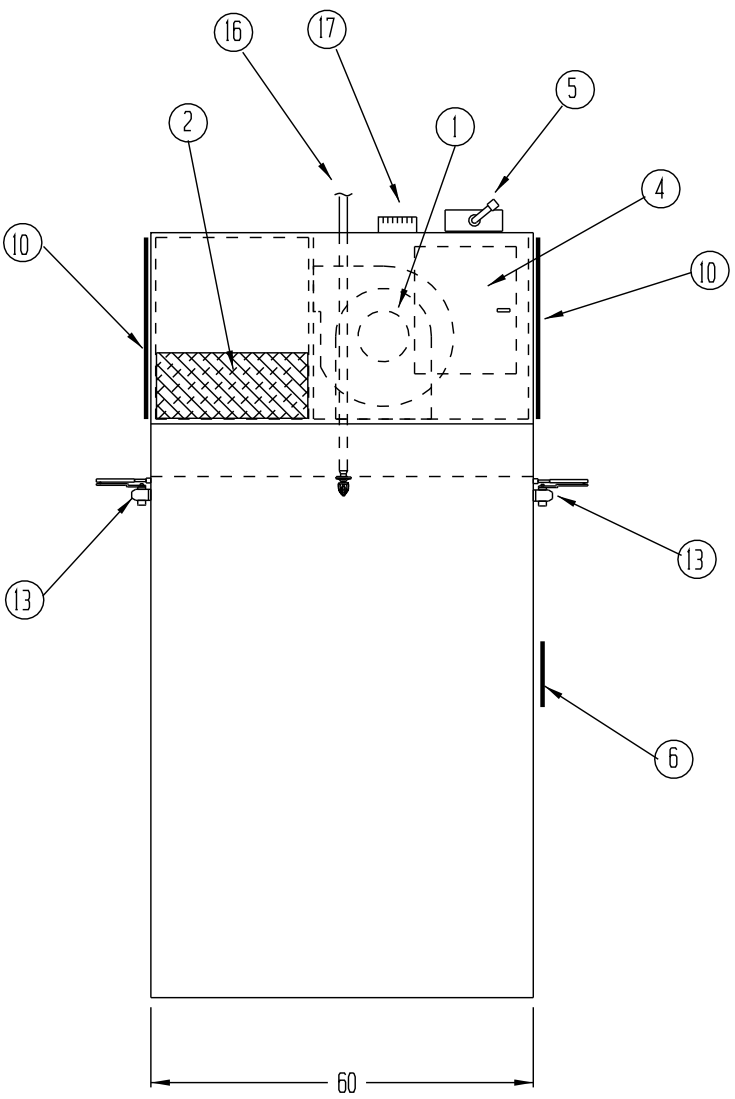


| REVISIONS | | | |
|-----------|------------------------|---------|----------|
| REV | DESCRIPTION | DATE | APPROVED |
| A | REQUESTED NOTE CHANGES | 1/20/96 | |

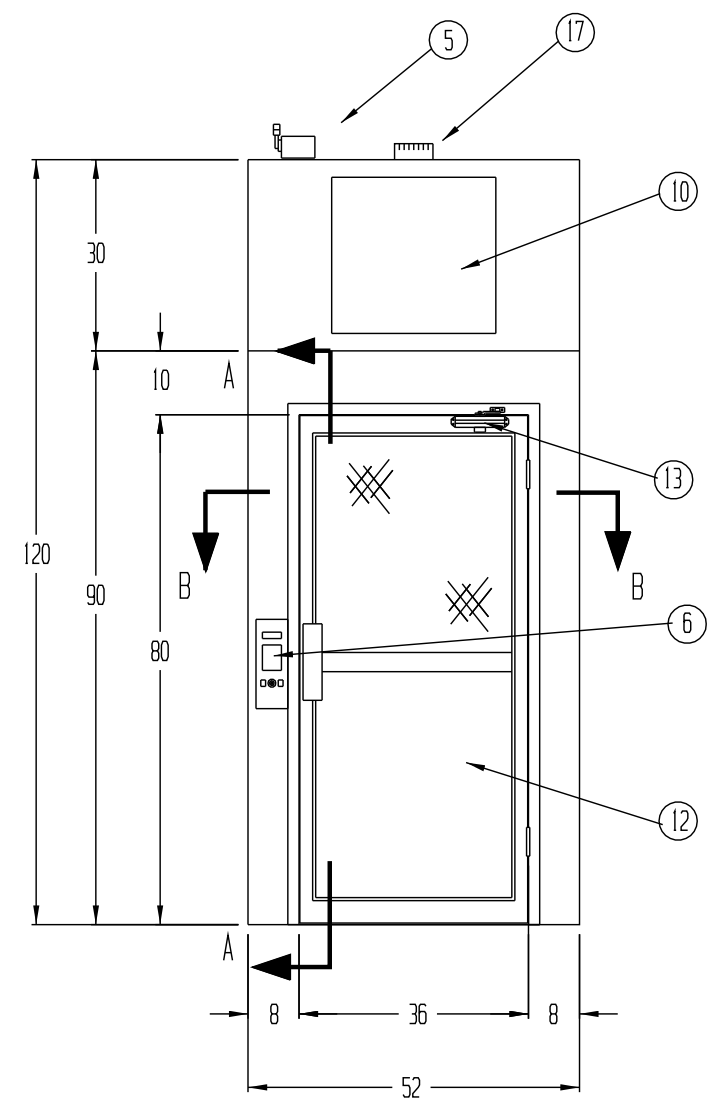


- NOTES:
- CONSTRUCTION TO BE 16 GA ALUMINIZED STEEL
 - INTERIOR AND EXTERIOR SURFACES TO BE LEFT UNFINISHED
 - ELECTRICAL WIRING TO CONFORM TO LATEST NEC STANDARDS
 - UNIT TO MEET FEDERAL STANDARD 209B AND 209E FOR CLASS 100 DEVICES
 - UNIT TO BE SHIPPED IN TWO SECTIONS, (1) TOP SECTION AND (1) BASE SECTION
 - UNIT TO BE SILICONE FREE (SILKAFLEX 221)
 - (2) TWO PERSON INTERIOR CAPACITY
 - SINGLE SOURCE POWER CONNECTION 480 VOLT, 3 PHASE, 60 HZ., 30 AMP

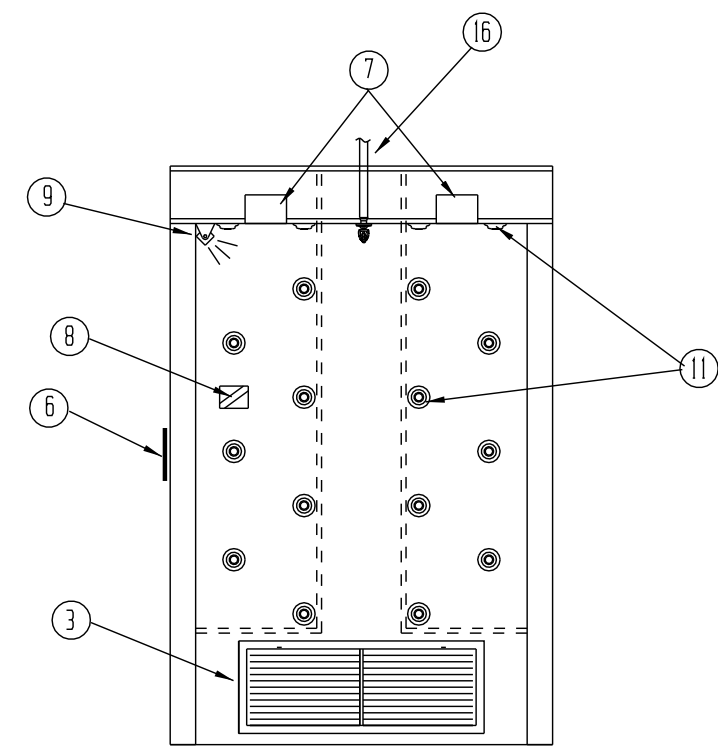
NO SILICONE



LEFT SIDE ELEVATION



FRONT ELEVATION



SECTION A-A

- ① 1 EA. DIRECT DRIVE MOTOR/BLOWER. TEFC, 5 H.P. 480 VOLT/ 3PHASE/ 60HZ / 7.6FLA. CAPABLE OF PRODUCING 2000 CFM AT 2" S.P.
- ② 1 EA. 24 X 24 X 11 1/2" HEPA FILTER. 99.99% EFFECTIVE ON PARTICLES OF 0.3 MICRONS AND LARGER.
- ③ 2 EA. 12 x 36, ANODIZED ALUMINUM PRE-FILTER GRILLES WITH 1" THK. 35% EFFICIENT DISPOSABLE PRE-FILTERS
- ④ ELECTRONIC CONTROL ENCLOSURE
- ⑤ 1 EA. NON-FUSED ELECTRICAL DISCONNECT SWITCH FOR CUSTOMER CONNECTION 480 VOLT, 3 PHASE, 30 AMP SERVICE
- ⑥ MICROPROCESSOR CONTROL PANEL WITH KEYPAD, LCD DISPLAY, AUDIBLE ALARM, LIGHT SWITCH, AND SYSTEM RESET BUTTON.
- ⑦ 2 EA. 2 FT. RECESSED FLUORESCENT LIGHT FIXTURES CAPABLE OF PRODUCING 60 F.C. WITH 120 VOLT TRANSFORMER FOR POWER
- ⑧ EMERGENCY STOP BUTTON
- ⑨ PROXIMITY SENSOR
- ⑩ SERVICE ACCESS PANELS
- ⑪ 40 EA. HIGH VELOCITY ADJUSTABLE AIR NOZZLES
- ⑫ ANODIZED ALUMINUM DOORS AND FRAMES WITH 1/4" THK. HALF WIRE-GLASS GLAZING.
- ⑬ DOOR CLOSERS
- ⑭ SUPPLY AIR CHASEWAY
- ⑮ RETURN AIR CHASEWAY
- ⑯ SPRINKLER HEAD WITH 1" BLACK IRON PIPE TO BE SUPPLIED (INSTALLED BY OTHERS)
- ⑰ 6" DIA. DUCT COLLAR FOR A/C CONNECTION

(2) UNITS REQUIRED, AS SHOWN

| | | | | | |
|---|--------------------|---|---------|----------|-----|
| DRAWN FOR HADEN #1050 CHRYSLER WARREN TRUCK DIV. | | HALCO PRODUCTS COMPANY 100 NORTH GORDON ST, ELK GROVE, ILLINOIS 60007 | | | |
| | | TITLE AS 357-MP-NF/AL-ST/SP | | | |
| DRAWN BY LVB | SIZE | JOB NO. | ENG NO. | 1086310A | REV |
| APPROVED BY | SCALE 3/4" = 1'-0" | DATE 11-19-95 | SHEET | | |