



# HALCO PRODUCTS COMPANY

100 N. Gordon Street - Elk Grove Village, IL 60007-1193  
Tel: 847-956-1600 - Fax: 847-956-0595  
E-Mail: Info@Halco-Products.com  
Website: www.Halco-Products.com



## ABSOLUTE CONSOLE SERIES

### ADVANTAGES

- DISPOSABLE PLENUM / NO FILTER SEAL
- VIRTUALLY MAINTENANCE FREE
- EASILY MAINTAINED
- FLEXIBLE DESIGN AND SIZES

### HOW IT WORKS

The basic concept of this work station is to draw air through a prefilter, blower, pressurize a HEPA plenum, and force air through the HEPA filter onto the work surface. The air then passes over the central work area driving out air borne contaminants allowing an ISO rated contamination free environment for ease of specific required operations.

The workstation has built-in monitor for HEPA differential pressure, pilot lights, and speed controls for blower module. Halco modules are manufactured using strict ISO guidelines and using materials of construction in line with proper QA/QC requirements. Materials available are stainless steel, 304 316 321 or painted steel for economy use. Modules can include HEPA or ULPA filters as needed. Lighting is LED work surface illumination.



### NO MORE SEALS

The ABSOLUTE concept eliminates HEPA leakage problems, since the HEPA filter is permanently installed into a disposable plenum, which means that we have eliminated the filter seal completely, consequently only the filter media is under direct air pressure and, since there are no seals in the ABSOLUTE concept no seals can leak.

### SAY GOODBYE TO THE OLD METHOD

The old method of replacing HEPA filters is quite involved, time consuming and costly. If the customer elects to change his own HEPA filters, he must be qualified in the use of filter test equipment. A small company, in all probability, would not have this equipment or the technician to perform this work. The ABSOLUTE concept eliminates this extensive and expensive procedure since the plenum and the HEPA filter are integral. The advantages are obvious.

### FEATURES

- Easy replacement HEPA
- Factory built & tested
- Filter status gauge
- Integral light/UV
- Class 100 ISO

### OPTIONS

- Gas cocks sink or exhaust ports
- Duplex receptacles
- Heated work surface
- Reverse flow for toxic chemicals or gases
- ECM motors

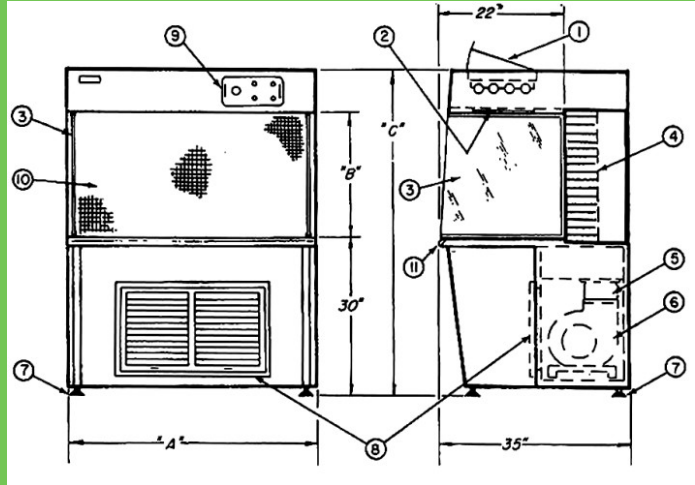
Call for a full list of options

# SPECIFICATIONS



## TYPICAL COMPONENTS:

1. LED light access
2. Sealed light lens
3. Removable plexiglass side panels
4. Disposable HEPA filter/plenum
5. Vibration absorption cushion
6. Shock mounted direct drive blower
7. Leg levelers
8. Air Inlet grill and disposable prefilter
9. Control panel
10. Anodized aluminum protective grill, removable
11. Comfort edge: saves elbows and garment sleeves



\* Optional 6" Deeper Work Surface

## CONSTRUCTION;

16 Ga. double wall construction SS 304, 316, 321 or painted steel

## DESIGN — APPEARANCE:

Color usually white. Other colors available on request.

## SEALED LIGHT LENS

No chance of contamination falling out through light fixture onto critical work surface. Lights easily serviced from above. (See inset).

## REMOVABLE SUPER- INTERCEPTION GRILL:

easy inspection Removable grill allows for and/or repair of HEPA filters.

## REMOVABLE ELECTRICAL PANEL:

Complete panel lifts out for inspection or addition of electrical outlets, meets all electrical codes.

## HEPA FILTER PRESSURE GAUGE:

Indicates HERA filter clogged — time to order replacement.

## VARIABLE SPEED BLOWER SWITCH:

Allows for increase/decrease of air velocity through HEPA filter. Especially where customer uses a gas flame. Also to keep velocities stable once filter starts to clog.

## COMFORT EDGE:

Rounded neoprene saves elbows and garment sleeves.

### Nominal Dimensions

Model No.	A	B	C
322AC	38"	22½"	60"
422AC	50"	22½"	60"
522AC	62"	22½"	60"
622AC	74"	22½"	60"
4302AC	50"	28½"	66"
5302AC	62"	28½"	66"
6302AC	74"	28½"	66"

## HALCO PRODUCTS COMPANY

100 North Gordon Street  
 Elk Grove Village, Illinois 60007-1193  
 (847) 956-1600 Fax (847) 956-0595  
 E-Mail: Info@Halco-Products.com  
 Website: www.Halco-Products.com

In line with our policy of continual product improvement, HALCO reserves the right to incorporate and use equipment and material to conform with the latest design of its products, and in keeping with the specifications of this equipment.