



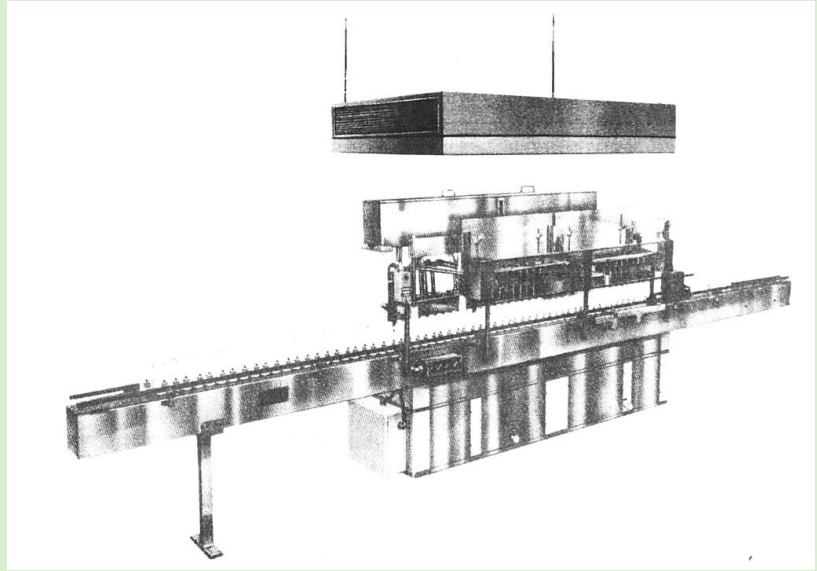
# HALCO PRODUCTS COMPANY

100 N. Gordon Street - Elk Grove Village, IL 60007-1193  
Tel: 847-956-1600 - Fax: 847-956-0595  
E-Mail: Info@Halco-Products.com  
Website: www.Halco-Products.com



## VERTICAL DOWNFLOW HANGING MODULE

The VFM module is a compromise between an individual downflow bench and a laminar downflow clean room. The Ceiling Module can be hung or suspended from any existing ceiling using standard threaded support rods or legs providing unobstructed passage under the unit. Machinery and personnel can then be easily set up under the unit for production or assembly. The unit is entirely self contained and delivered ready for operation. Motor, blowers and HEPA filters are mounted for easy access. LED lighting is designed into each unit to allow ample supply of illumination within the work area.

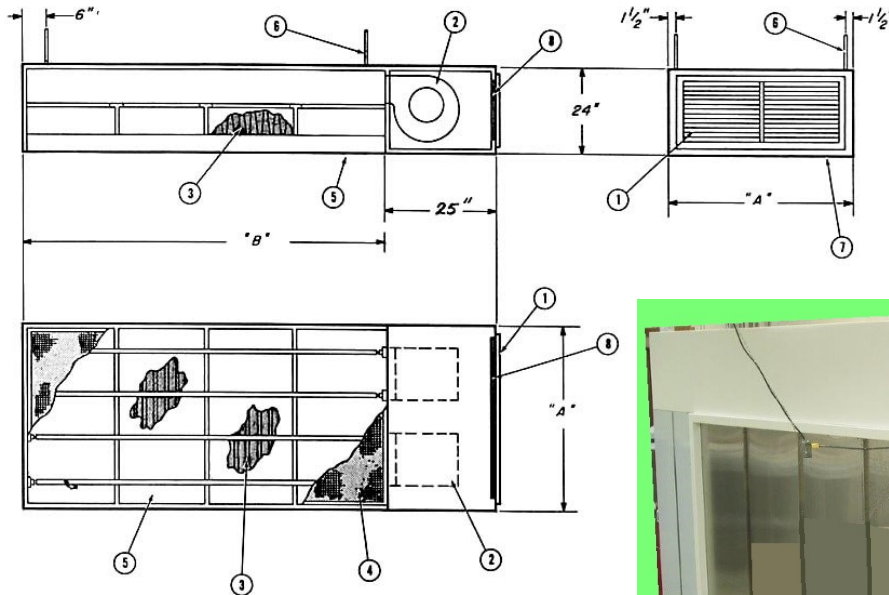


### Module with Curtains



MODEL NO.	NOMINAL HEPA AREA		CFM
	A	B	
VFM-26	24"	72"	1200
VFM-28	24"	96"	1600
VFM-36	36"	72"	1800
VFM-38	36"	96"	2400
VFM-46	48"	72"	2400
VFM-48	48"	96"	3200
VFM-410	48"	120"	4000
VFM-56	60"	72"	3000
VFM-58	60"	96"	4000
VFM-510	60"	120"	5000
VFM-66	72"	72"	3600
VFM-68	72"	96"	4800
VFM-610	72"	120"	6000

# SPECIFICATIONS



**TYPICAL COMPONENTS:**

- 1. Air inlet grille
- 2. Shock-mounted blower assembly
- 3. HEPA or ULPA filter
- 4. Removable plastic eggcrate grille
- 5. LED lighting
- 6. 1/2" Threaded hanging rods
- 7. Module housing
- 8. Disposable prefilter

**OPTIONAL EQUIPMENT:**

- 20 (40 or 60) MIL Vinyl Curtains (Specify)
- Magnehelic Gauge
- 3 Phase Motors
- Motor/Blower on Top
- Steel Construction, Epoxy Painted
- 304, 316, or 321 Stainless Steel Construction (Specify)
- ECM Motors
- Explosion Resistant Construction
- Specialized Monitoring and Speed Controls
- Hard Walls with Solid Polycarbonate
- Ducted Air Intake Connections
- LED Lighting
- Remote control panel

**FILTERS**

HEPA filters are 99.97% efficient on 0.3 micron size particles. Filter replacement takes place from below. LED fixtures are designed for quick disconnection and easy access.

**VELOCITY:**

Multiple speed motors are adjusted to maintain an air flow velocity of 100 FPM.

**ELECTRICAL:**

Available in 208, 240, or 480 volt 3 phase, 60 cycle or as specified. Meets all local electrical codes.

**LIGHTING:**

Light level is a minimum of 100 FC at work height.

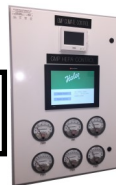
**NOISE LEVEL:**

Rated at less than 70 db on The A scale.

**PREMIUM FLOW CONTROL**



**CONTROL PANEL**



**HALCO PRODUCTS COMPANY**

100 North Gordon Street  
 Elk Grove Village, Illinois 60007-1193  
 (847) 956-1600 Fax (847) 956-0595  
 E-Mail: Info@Halco-Products.com  
 Website: www.Halco-Products.com

In line with our policy of continual product improvement, HALCO reserves the right to incorporate and use equipment and material to conform with the latest design of its products, and in keeping with the specifications of this equipment.