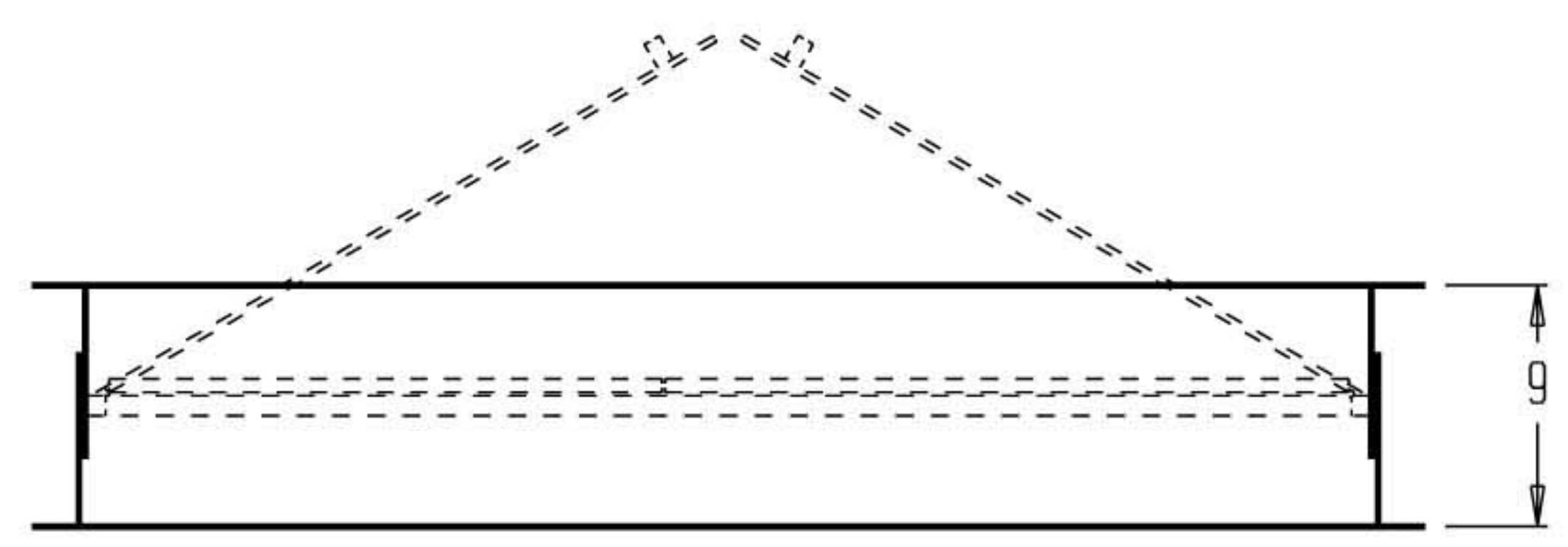
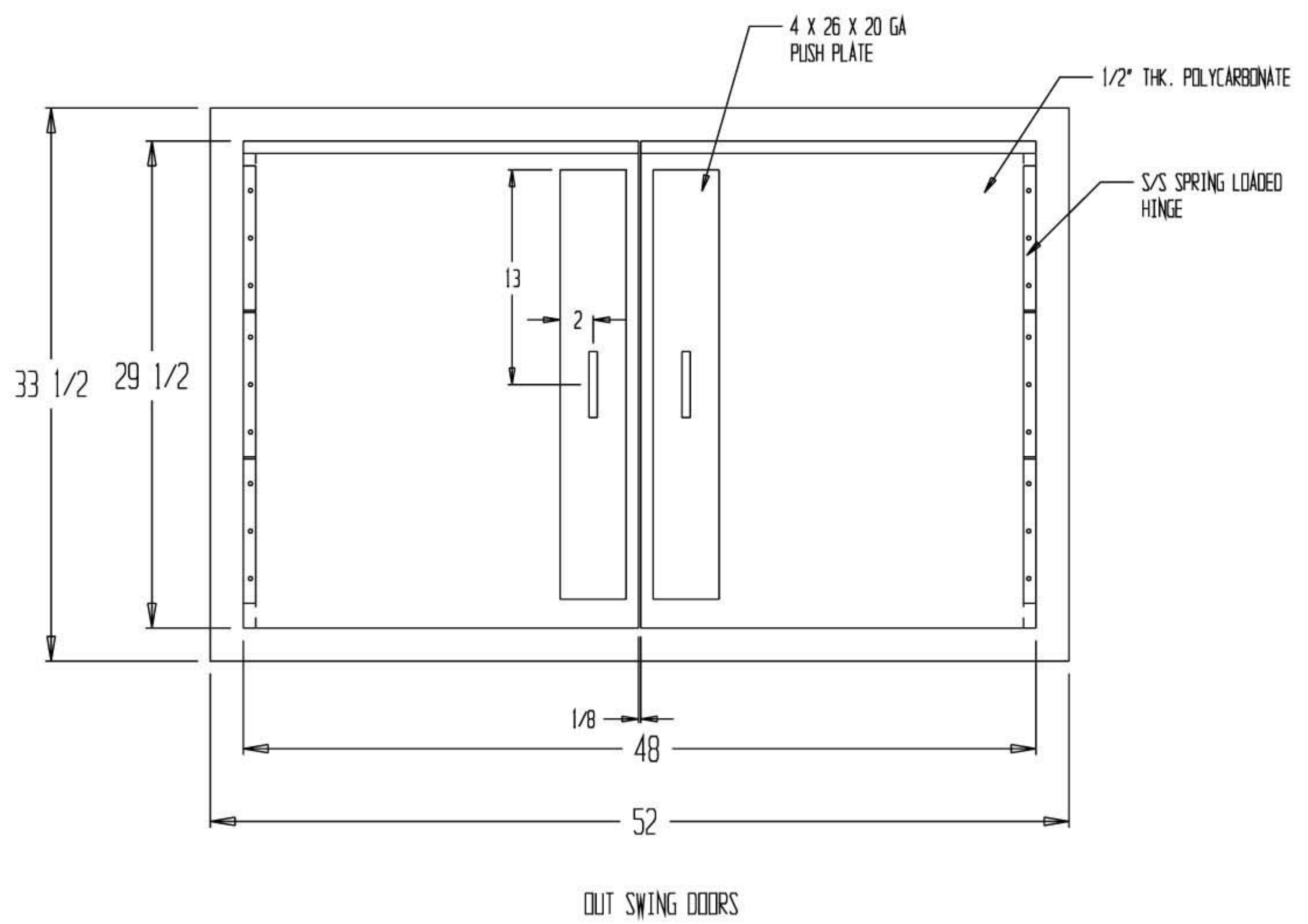


REVISIONS			
REV	DESCRIPTION	DATE	APPROVED

- NOTES:
- FRAME CONSTRUCTION OF 16 GA TYPE 304 SS, #4 POLISH FINISH
 - DOORS TO BE 1/2" CLEAR POLYCARBONATE
 - SS SPRING LOADED PIANO HINGE FOR SELF CLOSING
 - DOOR STOP ON (3) SIDES OF 3/4" X 3/4" SS TUBING W/ GREY PVC GASKET
 - CLEAR DOOR OPENING OF 46 1/2" WIDE X 28 3/4" HIGH
 - ROUGH OPENING OF 49" WIDE X 30 1/2" HIGH
 - FRAME IS ATTACHED WITH SS SCREWS THRU THE STOPS



DRAWN FOR		HALCO PRODUCTS CO. 100 NO. GORDON STREET ELK GROVE, IL. 60007		
		TITLE PASS THRU DOOR ASSEMBLY		
DRAWN BY	TM	SIZE	JOB NO. S1403	DWG NO. 1117027B0
APPROVED BY		SCALE	DATE 12-23-11	SHEET