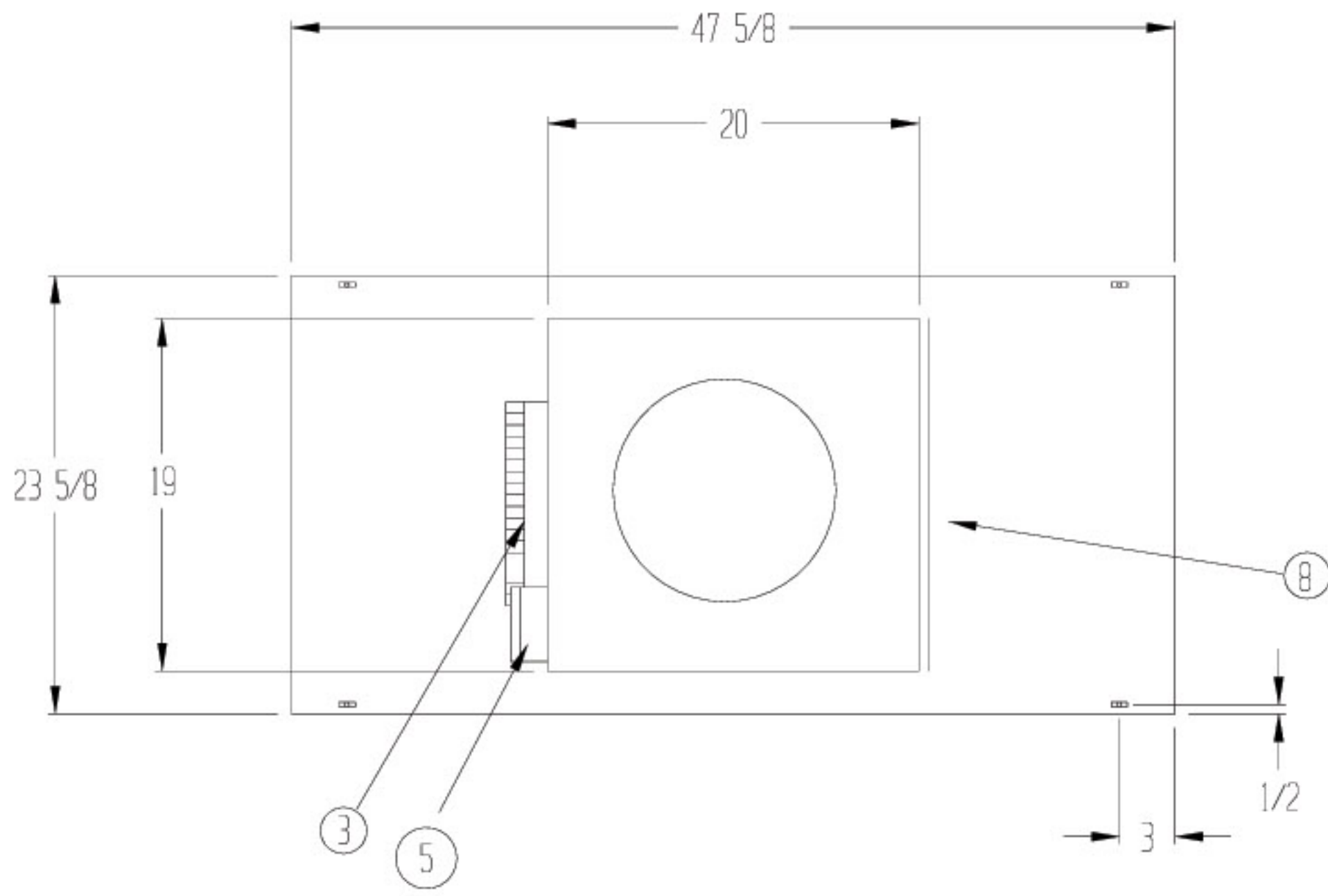
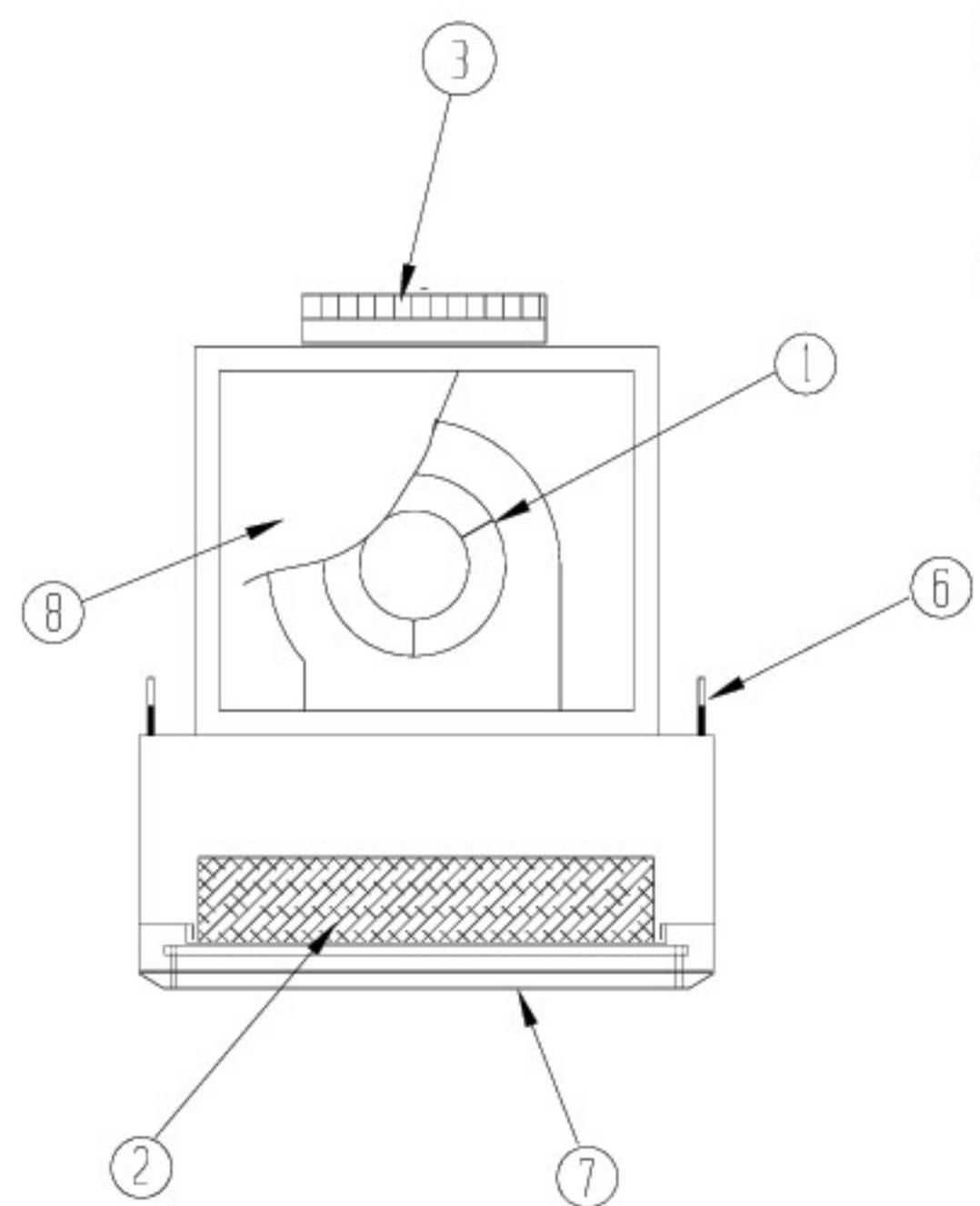
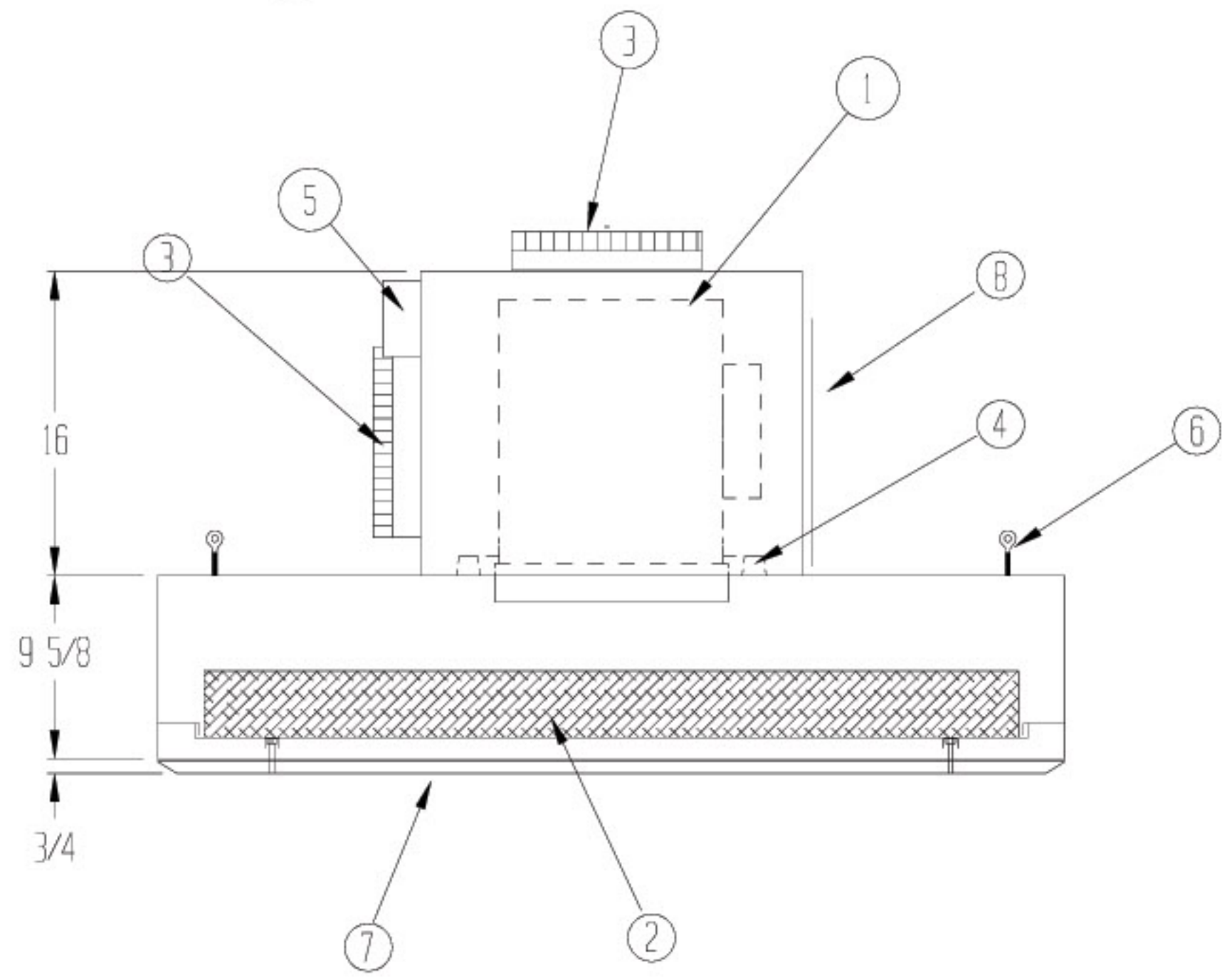


REVISIONS			
REV	DESCRIPTION	DATE	APPROVED



NOTE:

- HEPA FILTER REPLACED FROM BELOW WITHOUT DISTURBING CEILING OR HOUSING
- ELECTRICAL WIRING TO CONFORM TO LATEST NEC STANDARDS
- UNIT TO MEET ISO STANDARD 14644-1 (FED STD 209B AND 209E FOR CLASS 100 DEVICES)
- UNIT OPERATING WEIGHT 85 LBS.
- ELECTRICAL REQUIREMENTS: 115 VOLT, 60 HZ, 4.6 FLA



- ① 1 EA. 9-9A DIRECT DRIVE BLOWER WITH 1/3 H.P. GE ECM MOTOR. CAPABLE OF PRODUCING 800 CFM @ 1.0" STATIC PRESSURE
- ② 1 EA. 19 3/4 X 43 3/4 X 3 1/2" GEL SEAL HEPA FILTER 99.99% EFFECTIVE ON PARTICLES OF 0.3 MICRON IN SIZE FILTER TO HAVE INTEGRAL CENTER BOARD WITH TEST PORTS
- ③ 2 EA. 12" DIA STARTER COLLAR
- ④ 4 EA. MOTOR/BLOWER VIBRATION ISOLATORS
- ⑤ ELECTRONIC VARIABLE MOTOR SPEED CONTROL
- ⑥ 4 EA. EYEBOLT HANGING SUPPORTS
- ⑦ ANODIZED ALUMINUM PROTECTIVE HEPA GRILL W/ 1/8" DIA. HOLE ON 3/16" STAGGERED CENTERS PROVIDING AN OPEN AREA OF 40%.
- ⑧ MOTOR/BLOWER ACCESS PANEL

CONSTRUCTION:

- HOUSING CONSTRUCTED OF 14 GA. 3003-H14 MILL ALUMINUM
- ASSEMBLED WITH INSIDE TURNED FLANGES, CAULKED AND RIVETED

DRAWN FOR		<b>HALCO PRODUCTS COMPANY</b> 100 NO. GORDON STREET ELK GROVE, IL. 60007			
		TITLE FT2448-MD/AL/ECM			
DRAWN BY	TM	SIZE	JOB NO. -----	DWG NO.	1715804A0
APPROVED BY		SCALE	N/A	DATE	9-11-09