



1. NOTES:

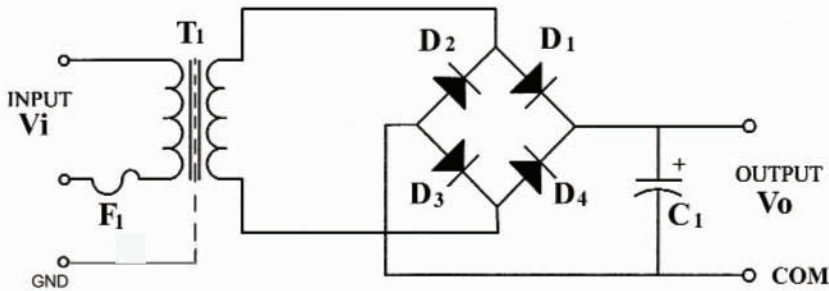
DIMENSIONS ARE IN MM UNLESS SPECIFIED OTHERWISE.

2. ELECTRICAL SPECIFICATIONS:

INPUT VOLTAGE:	220 VAC
INPUT CURRENT:	≤ 135 mA
INPUT FREQUENCY:	50 HZ
OUTPUT VOLTAGE:	+ 48 VDC ± 5 % @ RATED CURRENT
OUTPUT VOLTAGE (NO LOAD):	≤ 66.5 VDC
OUTPUT CURRENT (RATED):	250 mA
OUTPUT POWER (RATED):	12 WATTS MAX

PROTECTION:	THERMAL FUSE
SAFETY APPROVALS :	CE
DIELECTRIC WITHSTAND VOLTAGE:	3000VAC PRIMARY- SECONDARY
LEAKAGE CURRENT:	< 0.1 mA
EMI:	EN55022 CLASS B WHEN TESTED WITH A RESISTIVE LOAD, BOTH CONDUCTED AND RADIATED
OPERATING TEMPERATURE:	0° TO 40° C
TEMPERATURE RISE:	≤ 70 ° C FOR RATED LOAD.
STORAGE TEMPERATURE:	-20° TO 80° C
HUMIDITY:	0 TO 90% RELATIVE HUMIDITY

3. SCHEMATIC:

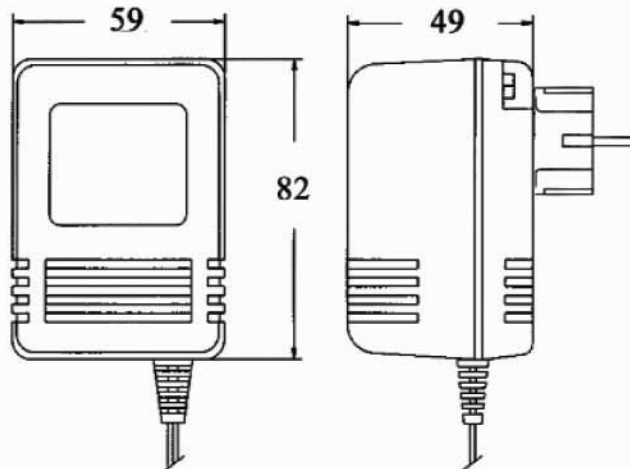


Design Values:

$V_I = 220$ V AC
 $V_O = 66.5$ V DC (No Load)
 $V_L = 48$ V DC @ 250 mA
F1 = Thermal Fuse 130°C

4. ENCLOSURE

UPPER HOUSING: HIGH IMPACT PLASTIC, 94V0 POLYCARBONATE, NON-VENTED, COLOR BLACK
LOWER HOUSING: HIGH IMPACT PLASTIC 94V0 POLYCARBONATE, NON- VENTED, COLOR BLACK
SIZE: 82 x 59 x 49 ± 1 mm



5. INPUT CONNECTOR:

CONFIGURATION: SCHUKO EUROPE PLUG CEE 7, 2 PINS, CLASS II

6. OUTPUT CORD:

2 CONDUCTOR, 18 AWG STRANDED WIRE, FLAT UL SPT-1 CORD TYPE, COLOR BLACK, LENGTH OF CORD: 1830 +100, -0 mm.
CORD IS MEASURED FROM THE HOUSING TO THE END OF OVERMOLD OF THE CONNECTOR.
CABLE IS TO BE MARKED WITH WIRE GAUGE, AND ALL APPLICABLE RATING AND SAFETY APPROVALS.