



HALCO PRODUCTS COMPANY

100 N. Gordon Street - Elk Grove Village, IL 60007-1193
Tel: 847-956-1600 - Fax: 847-956-0595
E-Mail: Info@Halco-Products.com
Website: www.Halco-Products.com

HALCO
PRODUCT
INFORMATION

500.4000

ABSOLUTE CONSOLE SERIES

ADVANTAGES

- DISPOSABLE PLENUM / NO FILTER SEAL
- VIRTUALLY MAINTENANCE FREE
- GOVERNMENT QA / QC

HOW IT WORKS

The basic concept of the work station is to take air through a blower system, pressurize a plenum, and force air through the HEPA filter. Since the filter is subject to extreme air pressures, it must be strong and well built. The air then passes over the central work area driving out air borne contaminants allowing a contamination free environment for particular specifications. If the filter is defective, the workstation filtration system no longer filters and becomes a vacuum cleaner, taking in gross contamination and exploding it through the defective filter onto and around the so called "critical work area. This can only happen in two ways: (a) through the filter media itself, or (b) around the filter seal.



NO MORE SEALS

The ABSOLUTE concept eliminates HEPA leakage problems, since the HEPA filter is permanently installed into a disposable plenum, which means that we have eliminated the filter seal completely, consequently only the filter media is under direct air pressure and, since there are no seals in the ABSOLUTE concept no seals can leak.

SAY GOODBYE TO THE OLD METHOD

The old method of replacing HEPA filters is quite involved, time consuming and costly. If the customer elects to change his own HEPA filters, he must be qualified in the use of filter test equipment. A small company, in all probability, would not have this equipment or the technician to perform this work. The ABSOLUTE concept eliminates this extensive and expensive procedure since the plenum and the HEPA filter are integral. The advantages are obvious.

FEATURES

- Easy replacement hepa
- Factory built & tested
- Filter status gauge
- Integral light/UV
- Class 100 ISO

OPTIONS

- Gas cocks
- Duplex receptionals
- Heated worksurfacers
- Reverse flow for toxic work

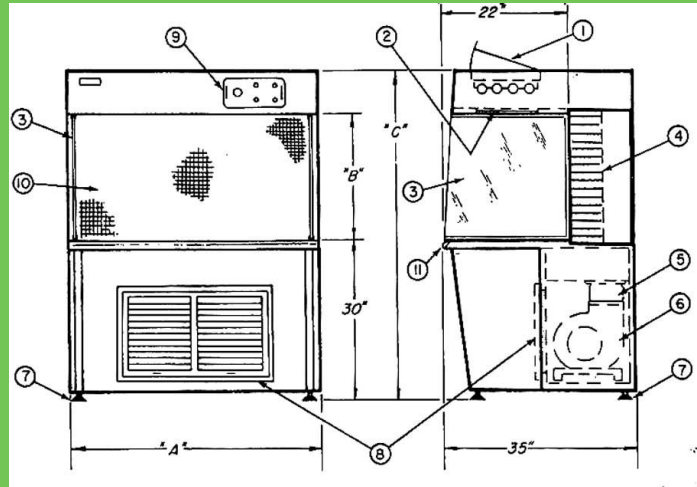
Call for a full list of options

SPECIFICATIONS



TYPICAL COMPONENTS:

1. Light access
2. Sealed light lens
3. Removable plexiglass side panels
4. Disposable HEPA filter/plenum
5. Vibration absorption cushion
6. Shock mounted direct drive blower
7. Leg levelers
8. Air Inlet grill and disposable prefilter
9. Control panel
10. Anodized aluminum protective grill, removable
11. comfort edge: saves elbows and garment sleeves



* Optional 6" Deeper WorkSurface

CONSTRUCTION;

Wood and/or Novcply construction with Melamine finish. (Formica or equal).

DESIGN — APPEARANCE:

Color usually white. Other colors on request.

SEALED LIGHT LENS

No chance of contamination fall out through light fixture onto critical work surface. Lights easily serviced from above. (See inset).

REMOVABLE SUPER- INTERCEPTION GRILL:

easy inspection Removable grill allows for and/or repair of HEPA filters.

REMOVABLE ELECTRICAL PANEL:

Complete panel lifts out for Inspection or addition of electrical outlets, meets all electrical codes.

HEPA FILTER PRESSURE GAUGE:

Indicates HERA filter clogged — time to order replacement.

TWO POSITION BLOWER SWITCH:

Allows for increase/decrease of air velocity through HEPA filter. Especially where customer uses gas flame. Also to keep velocities stable once filter starts to clog.

COMFORT EDGE:

Rounded neoprene saves elbows and garment sleeves.

Nominal Dimensions

Model No.	A	B	C
322AC	38"	22½"	60"
422AC	50"	22½"	60"
522AC	62"	22½"	60"
622AC	74"	22½"	60"
4302AC	50"	28½"	66"
5302AC	62"	28½"	66"
6302AC	74"	28½"	66"

HALCO PRODUCTS COMPANY

100 North Gordon Street
 Elk Grove Village, Illinois 60007-1193
 (847) 956-1600 Fax (847) 956-0595
 E-Mail: Info@Halco-Products.com
 Website: www.Halco-Products.com

In line with our policy of continual product improvement, HALCO reserves the right to incorporate and use equipment and material to conform with the latest design of its products, and in keeping with the specifications of this equipment.