



HALCO PRODUCTS COMPANY

100 N. Gordon Street - Elk Grove Village, IL 60007-1193

Tel: 847-956-1600 - Fax: 847-956-0595

E-Mail: Info@Halco-Products.com

Website: www.Halco-Products.com

HALCO
PRODUCT
INFORMATION

100.3000

PORTABLE DOWNFLOW ROOMS



This unit is a compromise between an individual down flow bench and a Laminar down flow clean room. It consists of a filter bank supported by legs which can be made expandable.

The air is contained by a transparent material which forms the walls of the device and gives the appearance of a curtain. The unit being mounted on wheels, can be rolled into position with ease.

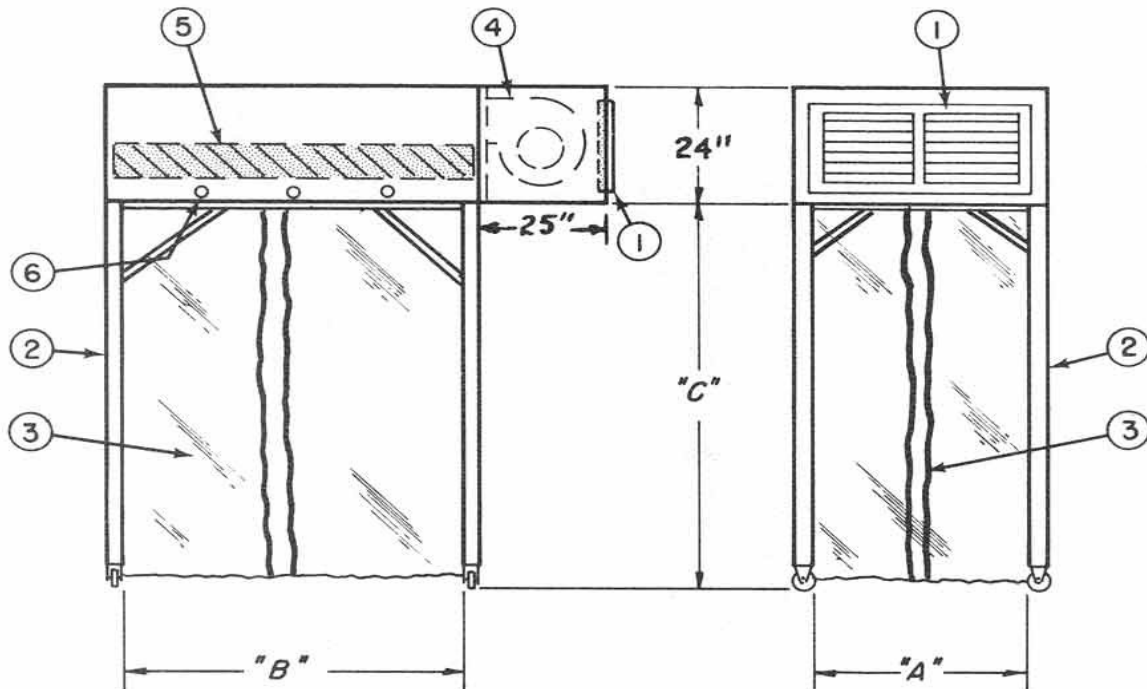
The portable downflow clean rooms are available in many standard sizes and may be designed so that modular rooms can be joined to form combinations of small installations or a large complex. Room heights vary according to particular application.

The flexible curtain may be varied and solid panels substituted. Plexiglass side panels offer a popular substitute.

Units can be bolted together to meet special Requirements.

MODEL NO.	HEPA AREA	CFM
	AxB	
DF28-7	24x96	1600
DF48-7	48x96	3200
DF58-7	60x96	4000
DF66-7	72 x 72	3600
DF68-7	72 x 96	4800
DF88-7	96x96	6400
DF810-7	96x120	8000
DF812-7	144x96	9600
DF912-7	144x108	10800
DF1010-7	120x120	10000
DF1210-.7	144x120	14400

SPECIFICATIONS



DIMENSIONS FOR CUSTOM UNITS:

'A' available in 1 ft. increments

'B' available in 6 in. increments

'C' customer requirement

TYPICAL COMPONENTS:

1. Air inlet grille and disposable prefilter
2. Steel frame with white enamel finish
3. Clear vinyl curtain
4. Shock-mounted blower assembly
5. HEPA filter
6. Fluorescent lighting
7. Optional lockdown casters

CONSTRUCTION:

High Density 7/8" particle board laminated with plastic (Formica or equal) or optional epoxy painted Cold Rolled Steel and Stainless Steel.

The Down Flow Clean Booth meets all the requirements of Federal Standard 209E/ISO.

FILTERS:

HEPA filters are 99.97% efficient on 0.3 micron size particles. Filter replacement takes place from below. Fluorescent fixtures are designed for quick disconnection and easy access

VELOCITY:

Variable speed drive is adjusted to maintain an air flow velocity of 100 FPM.

ELECTRICAL:

Standard 110 volt, 1 phase

Option - Available in 208, 240, or 480 volt, 3 phase, 60 cycle or as specified. Meets all local electrical codes

LIGHTING:

Light level is a minimum of 100 FC at work height.

NOISE LEVEL:

Rated at less than 70 db on the A scale.

OPTIONAL EQUIPMENT:

Swivel casters are available



HALCO PRODUCTS COMPANY

100 N. Gordon Street - Elk Grove Village, IL 60007-1193

Tel: 847-956-1600 - Fax: 847-956-0595

E-Mail: Info@Halco-Products.com

Website: www.Halco-Products.com