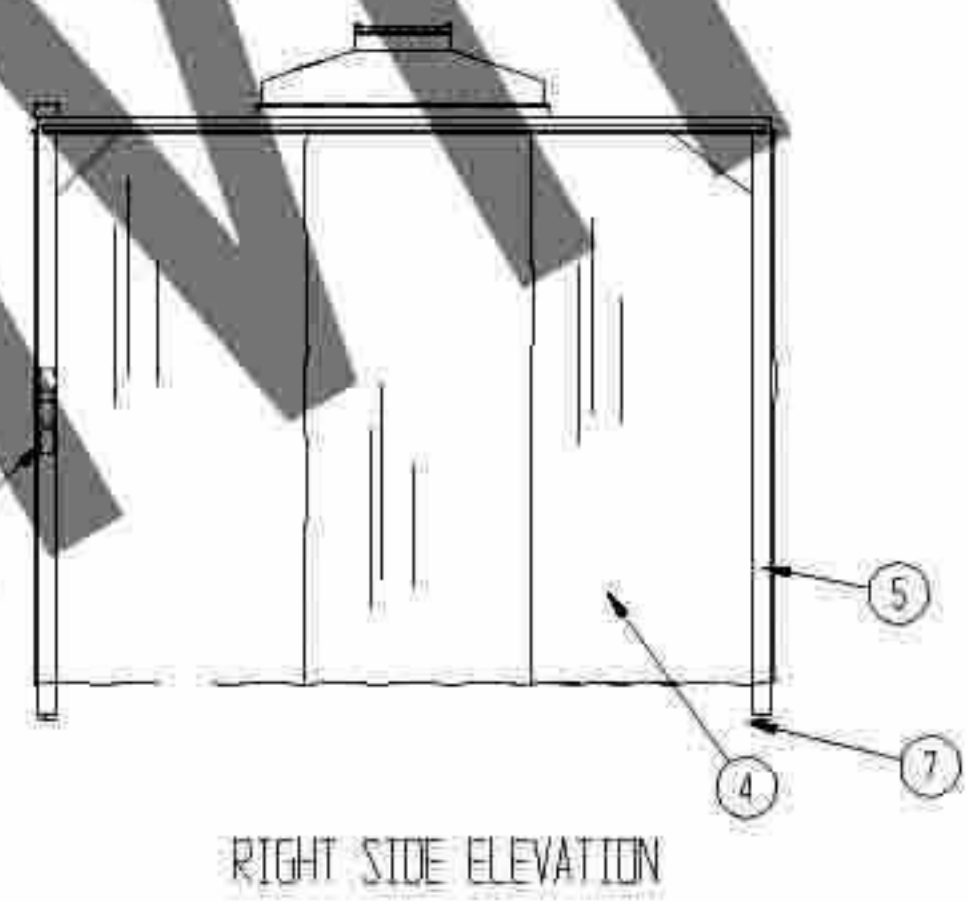
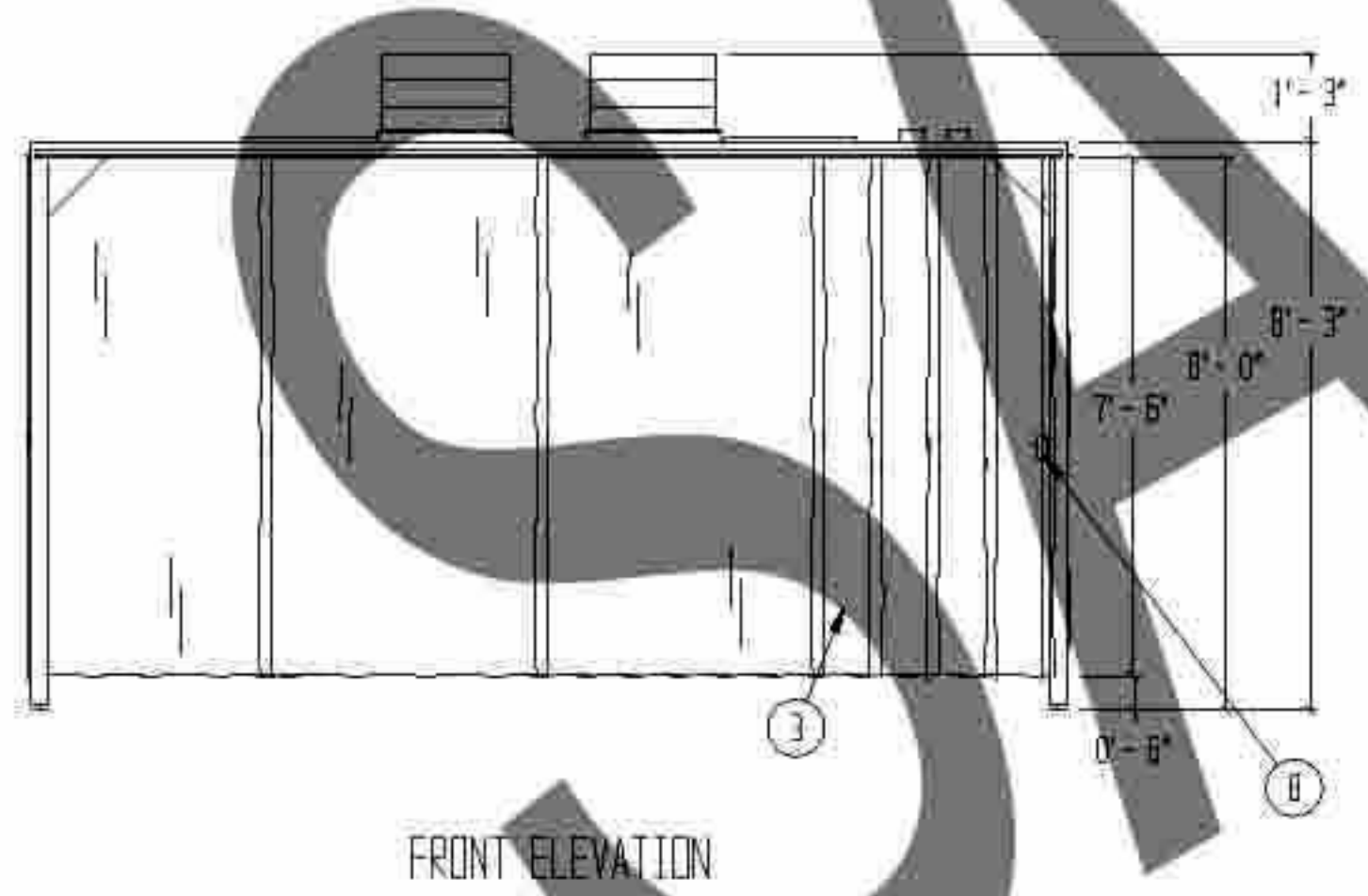


- NOTES:
- TUBULAR STEEL FRAME, PAINTED WHITE EPOXY, TO BE SHIPPED KNUCKED DOWN
 - UNIT TO MEET ISO STANDARD 14644-1 FOR CLASS 7
 - ELECTRICAL WIRING TO CONFORM TO LATEST NEC STANDARDS
 - ELECTRICAL REQUIREMENTS: HEPA-BLOWER MODULES, 115V, 60 HZ, 3:2 FLA
LIGHTS, 115V, 60HZ, 2.3 FLA

REVISIONS			
REV	DESCRIPTION	DATE	APPROVED
A	CHANGES PER ENGINEERING REVIEW	3/28/08	
B	UNIT DIMENSIONAL CHANGE	3/29/08	
C	REMOTE SPEED CONTROLS	3/31/08	

- ① 2 EA. AT-2000-1 HEPA-BLOWER MODULES, 99.95% EFFICIENT, WITH DISPOSABLE PRE-FILTERS, MOTOR DISCONNECT SWITCH
- ② 2 EA. 2" X 4" SEALED FLUORESCENT LIGHT FIXTURES
- ③ ANODIZED ALUMINUM TRACK WITH 60 MIL SOLID CLEAR VINYL CURTAINS IN 12" WIDE STRIPS WITH 2" OVERLAPS AS ENTRANCE
- ④ ANODIZED ALUMINUM TRACK WITH 40 MIL SOLID CLEAR VINYL CURTAINS IN 48" WIDE STRIPS WITH 8" OVERLAPS ON (3) SIDES
- ⑤ 3" X 3" X TUBULAR STEEL SUPPORT FRAME, PAINTED WHITE EPOXY
- ⑥ EPOXY PAINTED STEEL T-GRID WITH FOLYBOARD PANELS
- ⑦ 3/16" STEEL LEVELING PLATES FOR FLOOR MOUNTING
- ⑧ ON-OFF SWITCH FOR LIGHTS AND FAN FILTER UNIT SPEED CONTROLS
- ⑨ MODULES AND LIGHTS TO BE PRE-WIRED TO ONE COMMON JUNCTION BOX



(1) UNIT REQUIRED, AS SHOWN

DRAWN FOR		HALCO PRODUCTS CO. 100 NO. GORDON STREET ELK GROVE, IL. 60007			
		TITLE: DFE1215-8 CLASS 10,000			
DRAWN BY	TW/DK	SIZE	OR. NO.	ING. NO.	REV. C
APPROVED BY		SCALE	1/4" = 1'-0"	DATE	SHEET