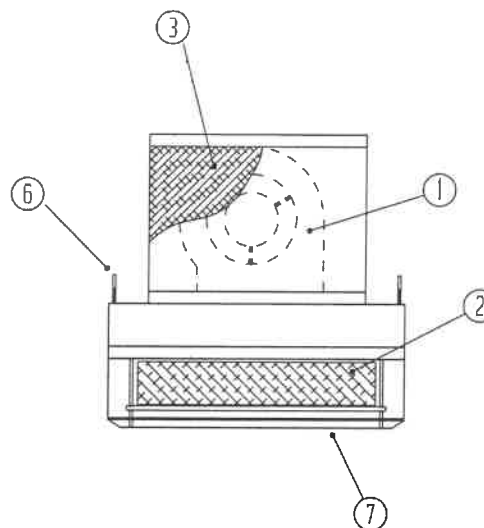
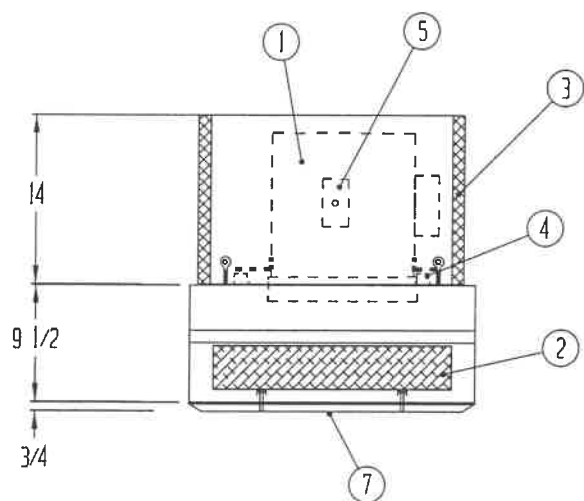
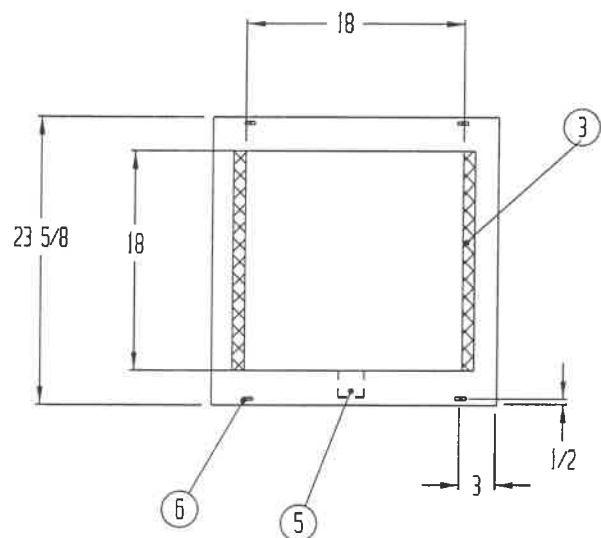


REVISIONS			
REV	DESCRIPTION	DATE	APPROVED

NOTE:

- HEPA FILTER REPLACED FROM BELOW WITHOUT DISTURBING CEILING OR HOUSING
- ELECTRICAL WIRING TO CONFORM TO LATEST NEC STANDARDS
- UNIT TO MEET FEDERAL STANDARD 209B AND 209E FOR CLASS 100 DEVICES
- UNIT OPERATING WEIGHT 85 LBS.
- ELECTRICAL REQUIREMENTS: 115 VOLT, 60 HZ., 4.6 FLA



- ① 1 EA. 9-7AT DIRECT DRIVE BLOWER WITH 1/4 H.P. MOTOR. CAPABLE OF PRODUCING 300 CFM @ .55" INITIAL HEPA FILTER STATIC PRESSURE
- ② 1 EA. 19 3/4 X 19 3/4 X 3 1/2" ANODIZED ALUMINUM FRAMED HEPA FILTER, 99.99% EFFECTIVE ON PARTICLES OF 0.3 MICRONS AND LARGER
- ③ 2 EA. 14" X 18" X 1" DISPOSABLE PREFILTERS, 3-PLY
- ④ 4 EA. MOTOR/BLOWER VIBRATION ISOLATORS
- ⑤ ELECTRONIC VARIABLE SPEED CONTROL
- ⑥ 4 EA. EYEBOLT HANGING SUPPORTS
- ⑦ ANODIZED ALUMINUM PROTECTIVE GRILLE WITH 1/8" DIA. HOLE ON 3/16" STAGGERED CENTERS PROVIDING AN OPEN AREA OF 40%.

CONSTRUCTION:

- HOUSING CONSTRUCTED OF 14- GA. 3003-H14 MILL ALUMINUM
- ASSEMBLED WITH INSIDE TURNED FLANGES, CAULKED AND RIVETED

DRAWN FOR		HALCO PRODUCTS CO.		
		100 NO. GORDON STREET ELK GROVE, IL. 60007		
		TITLE FILTER MODULE MODEL FT2424MG/PF/AL		
DRAWN BY	TM	SIZE	JOB NO.	ENG. NO.
APPROVED BY	TM	SCALE	N/A	DATE 2-25-11
				1716629A0
				SHEET