

FLOOR PLAN
SCALE: 1/8" = 1'-0"

2
MI.0



REFLECTED CEILING PLAN
SCALE: 1/8" = 1'-0"

CEILING FABRICATED OF 2"X4" 304 SST WITH #4 BRUSHED FINISH. TUBING HAS 1/8" SST STRIP WELDED TO ROOM SIDE

3"X3" 304 SST LEGS WITH #4 BRUSHED FINISH TYP. 15

LIGHT FIXTURE SCHEDULE

TAG	LOCATION SERVED	SIZE	LUMENS	TYPE	MOUNTING	LENS		VOLTAGE POWER				MANUFACTURER		BULB	NOTES
						TYPE	SIZE	AMP	VOLT	PH	HZ	MANUF.	MODEL #		
L-1	CLEAN ROOM	24 x 48	4710	LED	T-GRID	ACRYLIC	0.125	.55	120	1	60	HALCO	KSLED	LED 4000	

1. HIRED TO CONTROL PANEL SWITCH CIRCUIT BA-10

HEPA BLOWER SCHEDULE

TAG	LOCATION SERVED	SIZE	CONST.	HEPA % EFF.	MOUNTING	HEPA		VOLTAGE POWER				MANUFACTURER		NOTES
						TYPE	AMP	VOLT	PH	HZ	MANUF.	MODEL #		
H-1	CLEAN ROOM	24 x 48	304SS	99.99%	T-GRID	FLEADED	1.42	120	1	60	HALCO	AT2000		

1. ELECTRICIAN TO BRING IN TWO (2) 120-1-60 ELECTRICAL CIRCUITS FOR HEPA FILTERS
 A. HBA-3B
 B. UNKNOWN V.F.F. INCLUDES 1" PREFILTER

CURTAIN SCHEDULE

TAG	LOCATION SERVED	OPENING SIZE	CURTAIN WIDTH	TYPE	MOUNTING	STYLE		NOTES
						COLOR	THICKNESS	
C-1	CLEAN ROOM	36"	8"	ANTISTATIC	HOOKBEAD	CLEAR	80 MIL	
C-2	CLEAN ROOM	-	AS SHOWN	ANTISTATIC	HOOKBEAD	CLEAR	40 MIL	

1. MOUNTED USED BASE COVER AND HOOKBEAD DESIGN. SEE DETAIL.

EQUIPMENT SCHEDULE

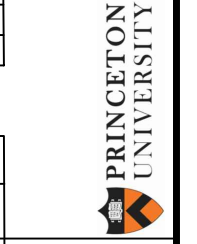
MARK	SYMBOL	NAME	NOTE	QUANTITY
H-1		HEPA BLOWER	HIGH EFF.	12
L-1		LIGHT	4000K	15
BT		BLANK TILE	SEALED EDGES	AS SHOWN
CP		CONTROL PANEL	2-120/160	1

Halco Products Co.
100 North Gordon Street
Elk Grove Village, IL 60007-1193
Tel: 847-956-1600
Fax: 847-956-0505
www.halco-products.com



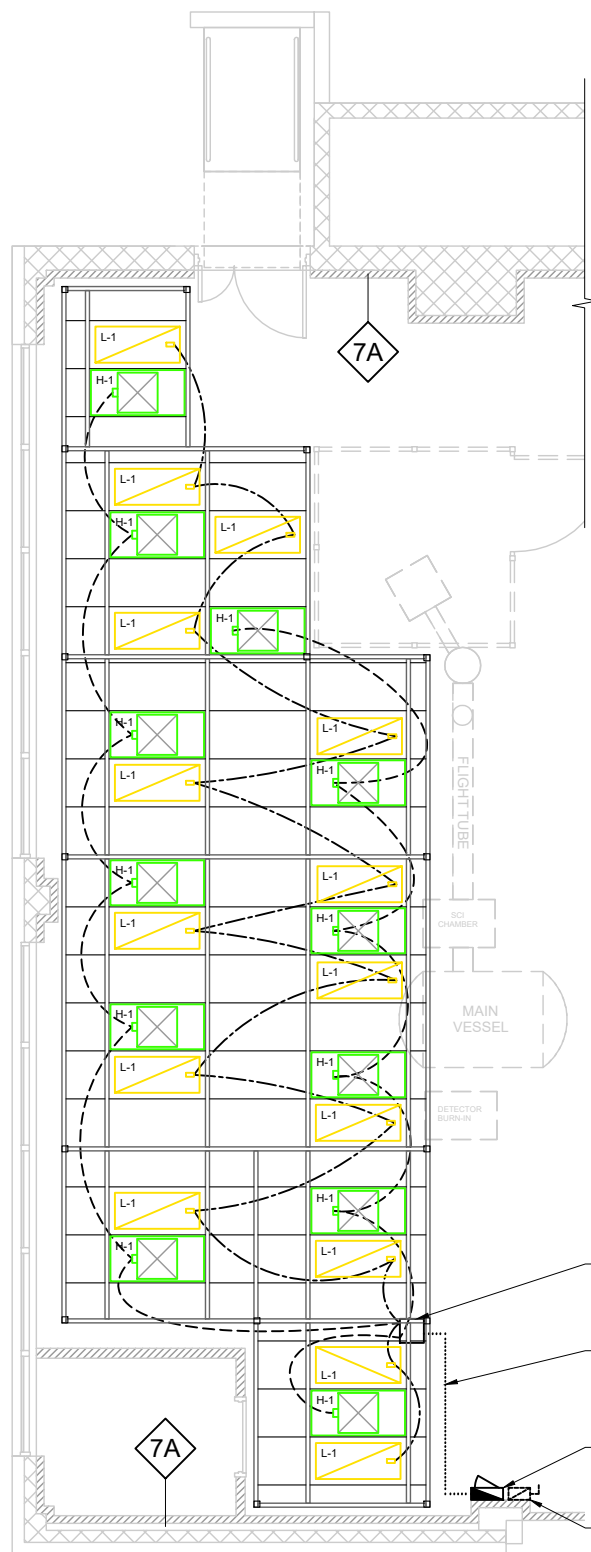
DATE: 07.11.19

REV1	08.12.19
REV2	10.29.19



SOUTH WING RENOVATION
PRINCETON UNIVERSITY
171 BROADMEAD ST
PRINCETON, NJ 08540

SHEET NO: M1.0



GENERAL NOTES:

- CONTROL PANEL FIELD MOUNTED BY ELECTRICIAN, FED BY THREE (3) ELECTRICAL CIRCUITS.
 #BA10=LIGHTS (120/160 20A)
 #BA38=HEPAS (120/160 20A)
 #UNKNOWN (120/160 20A) V.I.F.
- CONTRACTOR TO PROVIDE LOCAL DISCONNECT PRIOR TO CP-1 PANEL.
- CONTRACTOR TO PROVIDE CONDUIT WIRING AND CONNECTIONS FROM CP-1 TO CR-JB.

PREWIRING KIT:

LIGHTING: _____

HEPA BLOWERS: _____

NOTE: ACTUAL CABLE LAYOUT MAY DIFFER.

NOTE:

- CABLE LAYOUT FOR POWER 50/50 FOR HEPAS AS SHOWN

CR-JB (STAINLESS STEEL) WIRING CONNECTIONS

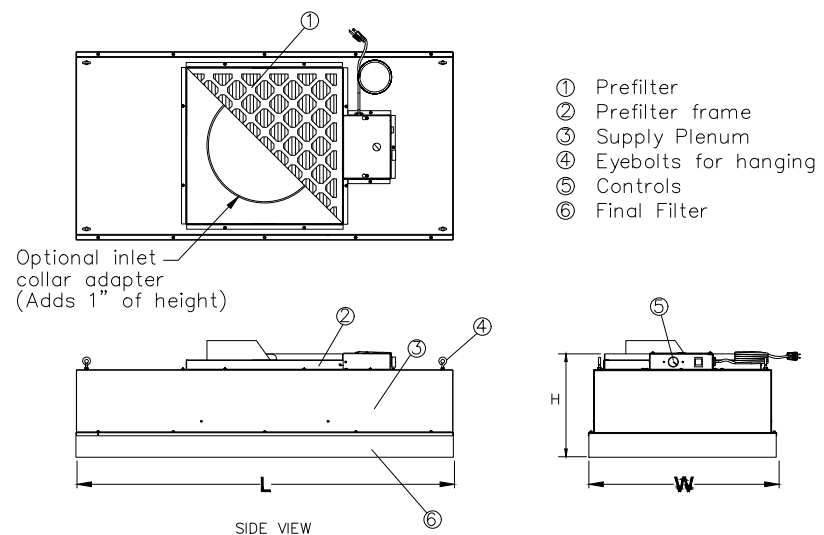
1" C THREE (3) SETS OF (3) #12 IN FIELD BY ELECTRICIAN

CP-1 (STAINLESS STEEL) CONTROL PANEL NOTES 1,2,3

DISCONNECT BY E.C.

ELECTRICAL PLAN
SCALE: 1/8" = 1'-0"

3
M.I.I

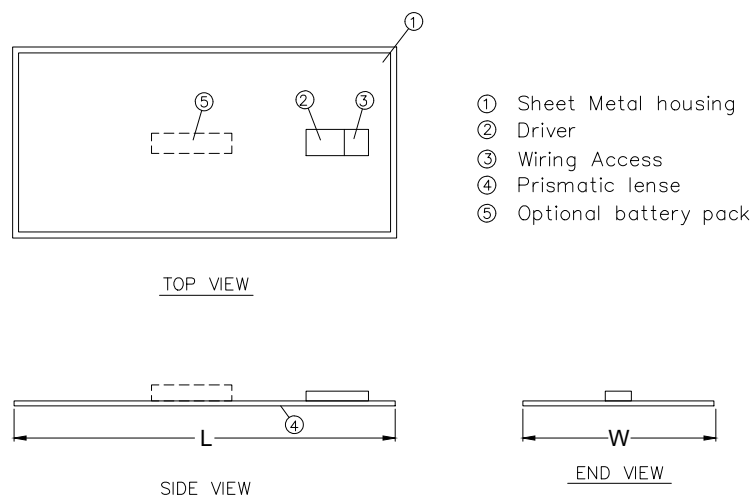


UNIT SIZE	DIM 'W'	DIM 'L'	WEIGHT (LBS)	DIM 'H' STD
2' x 4'	23.62"	47.62"	78	13.25"

HEPA BLOWER DETAIL

1/2=1'-0"

2
M.I.I



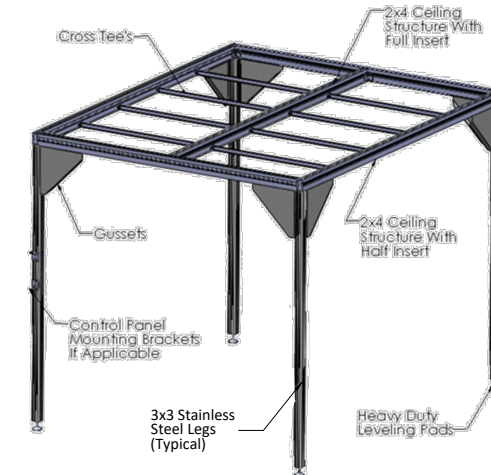
NOM. SIZE	WEIGHT (LBS)	DIM 'W'	DIM 'L'
2' x 2'	12	23.62"	23.62"
2' x 4'	15	23.62"	47.62"

C UL US LISTED

LIGHT FIXTURE DETAIL

1/2=1'-0"

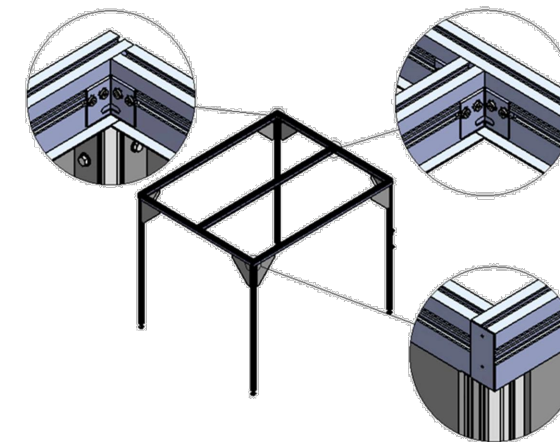
1
M.I.I



SOFTWALL STRUCTURE

N.T.S.

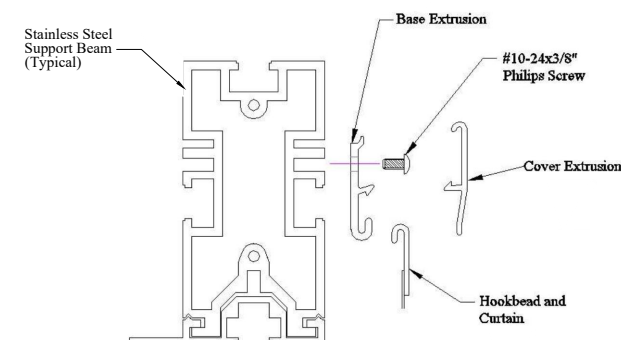
C
M.I.I



TYP. INTERSECTION DETAIL

N.T.S.

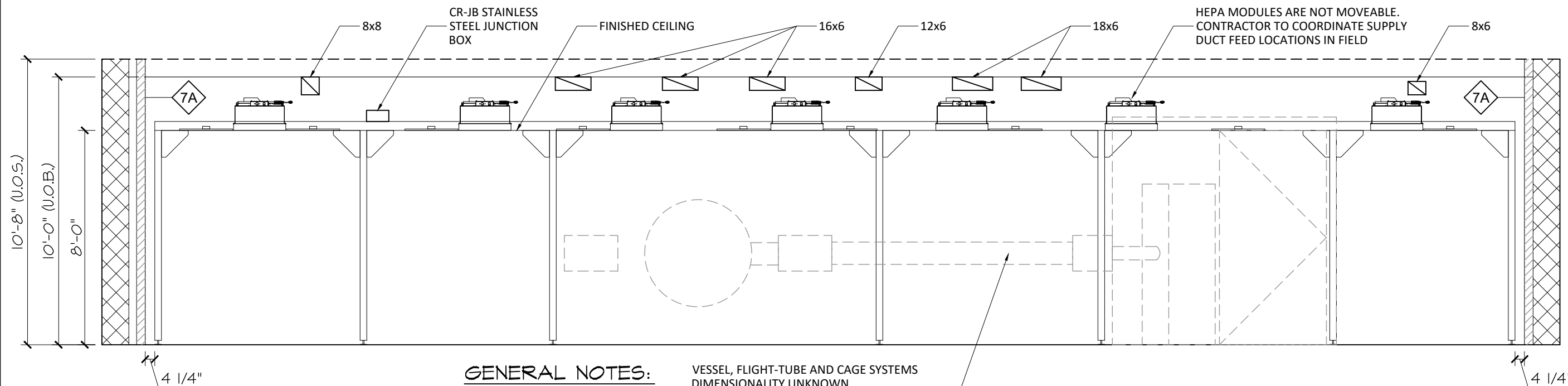
B
M.I.I



CURTAIN HANGING DETAIL

N.T.S.

A
M.I.I



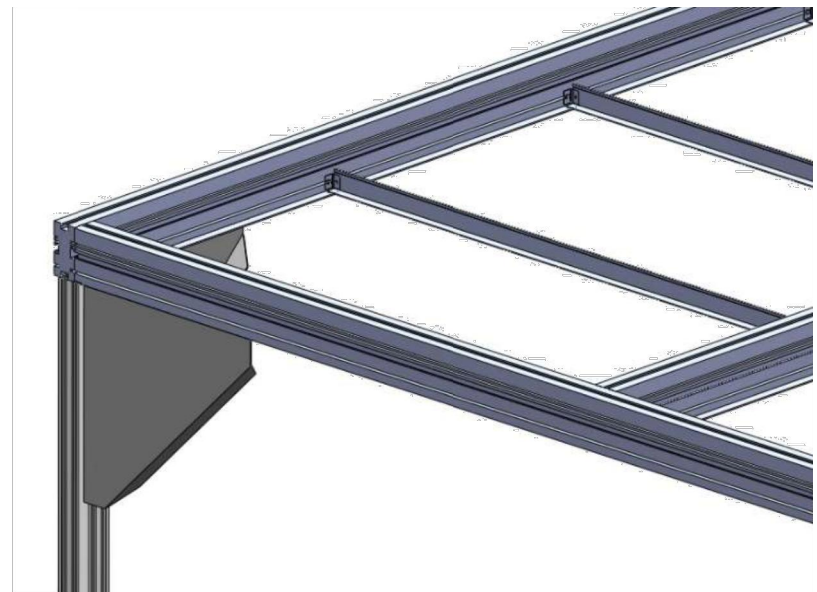
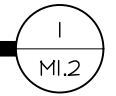
GENERAL NOTES:

1. ALL SUPPLY DUCTS SHOWN SHALL BE MOUNTED AS HIGH AS POSSIBLE TO AVOID CONFLICT WITH CLEAN ROOM CEILING HEPAS AND UTILITY.
2. ELECTRICAL AND SPRINKLERS IF APPLICABLE TO BE MOUNTED AS HIGH AS POSSIBLE TO AVOID CONFLICT WITH CLEAN ROOM CEILING HEPAS AND UTILITY.
3. CONTRACTOR TO VERIFY ALL CLEARANCE, DIMENSIONS PRIOR TO APPROVAL.

VESSEL, FLIGHT-TUBE AND CAGE SYSTEMS DIMENSIONALITY UNKNOWN. SHOWN FOR CLEARANCE PURPOSES ONLY. DIMENSIONALITY TAKEN FROM ORIGINAL BID SET DRAWINGS. CONTRACTOR TO VERIFY CLEARANCES OF FLIGHT TUBE SYSTEM WITH CLEAN ROOM SUPPORT LEGS.

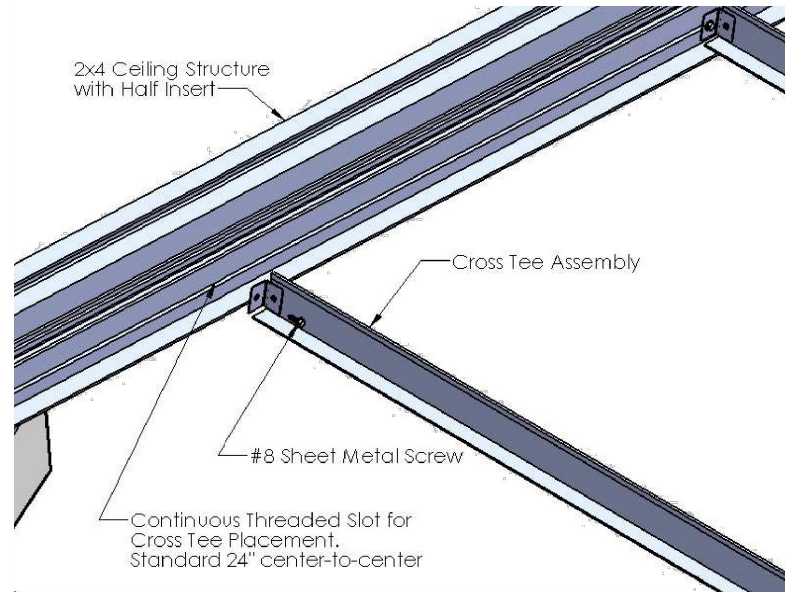
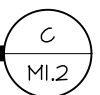
SECTION A-A

SCALE: 1/4" = 1'-0"



TYP. ASSEMBLY DETAIL

N.T.S.



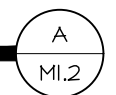
TYP. ASSEMBLY DETAIL

N.T.S.

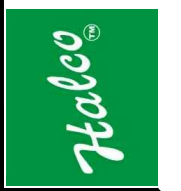


GASKETING DETAIL

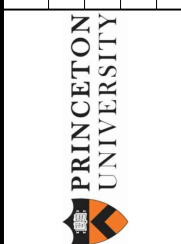
N.T.S.



Halco Products Co.
100 North Gordon Street
Elk Grove Village, IL 60007-1193
Tel: 847-956-1600
Fax: 847-956-0505
www.halco-products.com



REV:	DATE:
REV1	07.11.19
REV2	08.12.19
	10.29.19



SOUTH WING RENOVATION

PRINCETON UNIVERSITY
171 BROADMEAD ST
PRINCETON, NJ 08540

SHEET NO:

M1.2