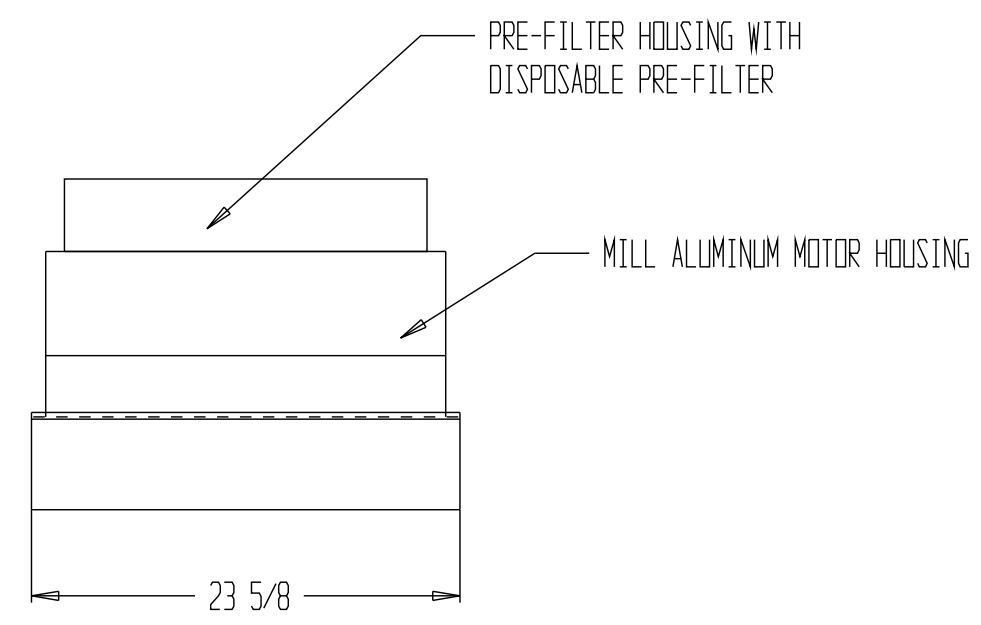
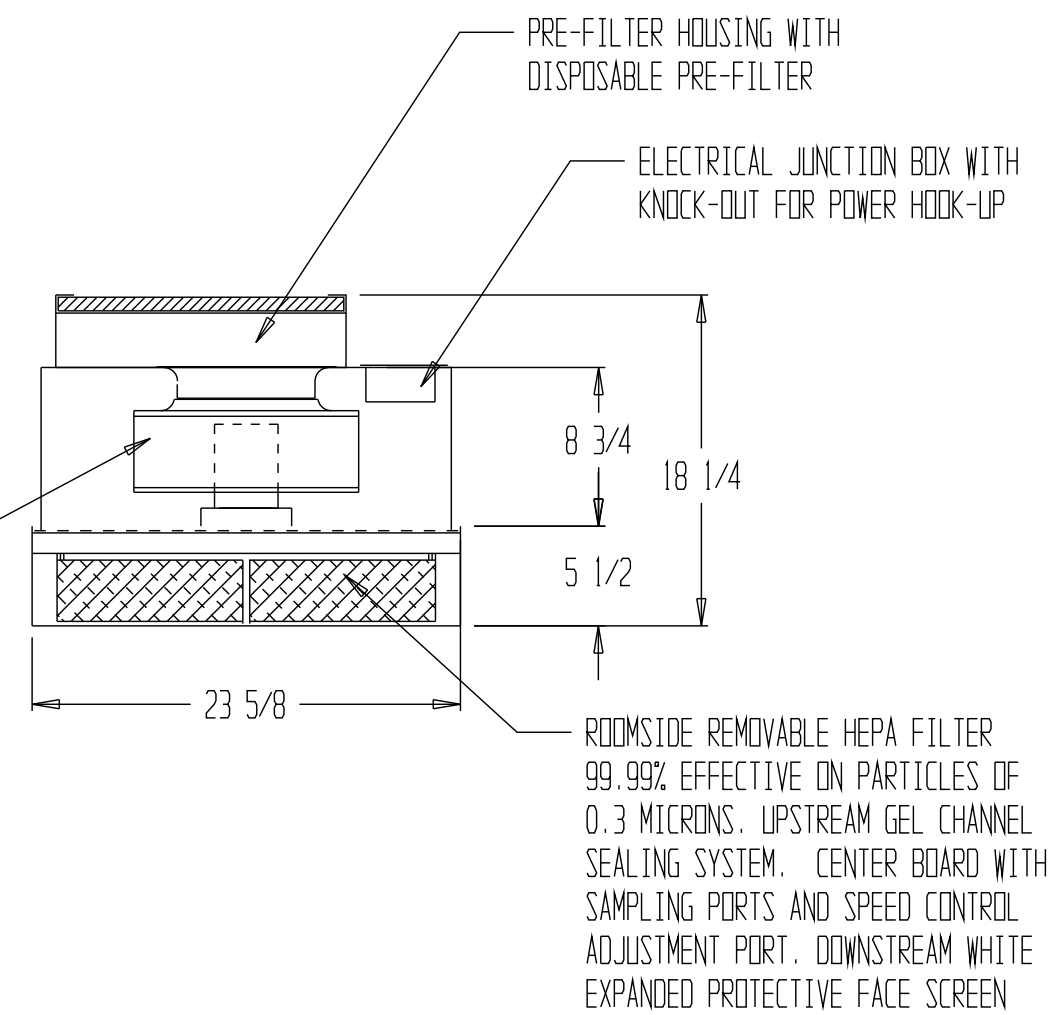
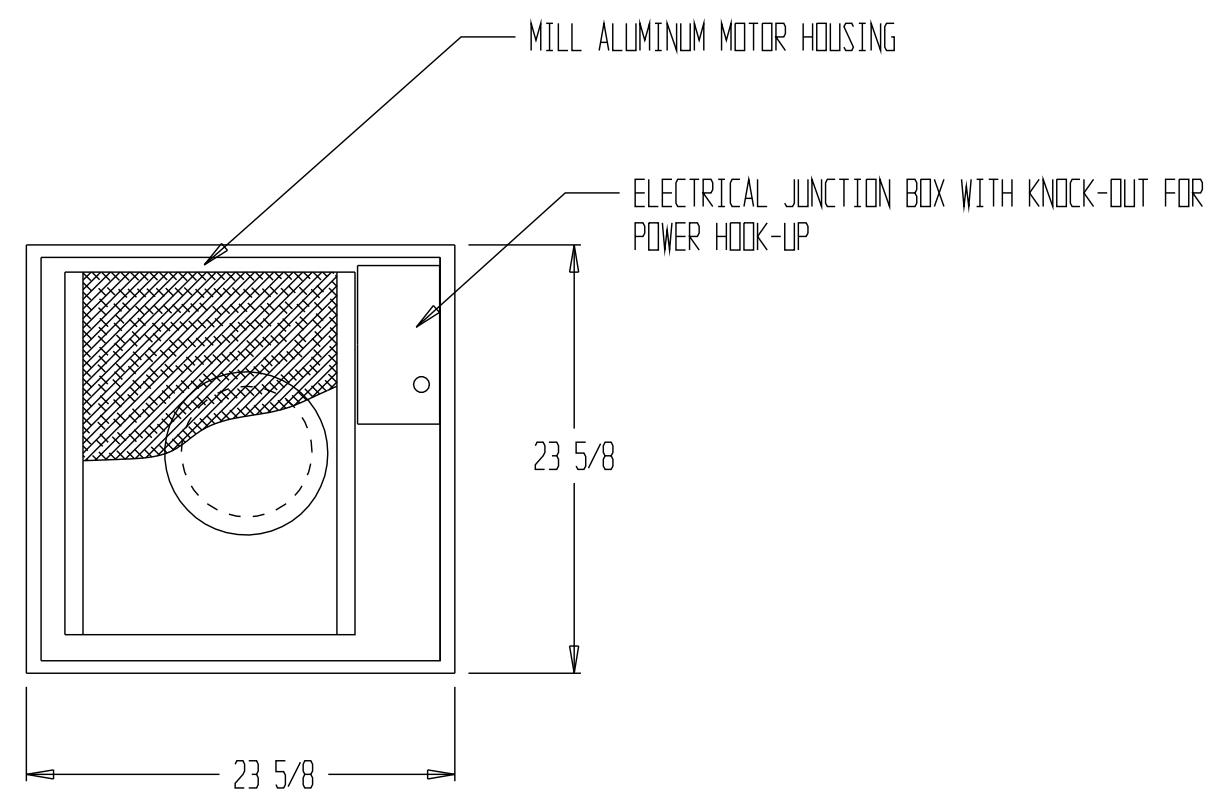


REVISIONS			
REV	DESCRIPTION	DATE	APPROVED

NOTES:

- ELECTRICAL TO MEET LATEST NEC CODES
- ELECTRICAL REQUIREMENT: 115 VOLT, 1 PHASE, 60 HZ., 1.4 FLA
- HEPA FILTER TO HAVE 19.31" X 10.5" FILTER AREA ON EITHER SIDE OF THE CENTER DIVIDER PRODUCING AN EFFECTIVE AREA OF 5.63 SF OF MEDIA WITH A PACK DEPTH OF 70 mm.
- AIR VELOCITY OF 90 FPM MEASURED 6" FROM FILTER FACE WILL YIELD 250 CFM WITH A MAXIMUM OF 400 CFM AT HIGH SPEED MEASURED WITH A FLOW HOOD.
- INDEPENDENT LAB TESTING SHOWS A SOUND LEVEL OF 61 DBA AT 90 FPM MEASURED 30" BELOW FILTER WITH A STATIC PRESSURE OF .54" WG.
- UNIT WEIGHT 50 LBS.
- ROOMSIDE ADJUSTABLE SPEED CONTROL WITH OFF SETTING



DRAWN FOR PRECOR INC LENEX, KA	HALCO PRODUCTS CO.			
	100 NO. GORDON STREET ELK GROVE, IL. 60007			
	TITLE AT2000-441100 FAN FILTER UNIT			
DRAWN BY TM	SIZE	JOB NO. -----	DWG NO. 1718134B0	REV
APPROVED BY	SCALE 1"=1'	DATE 4-7-14	SHEET	