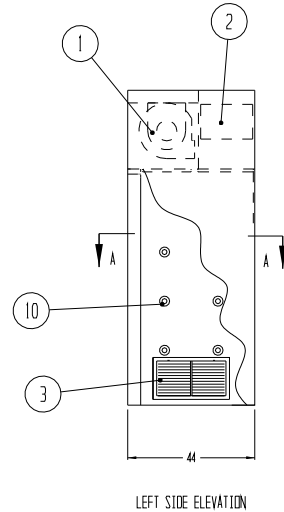
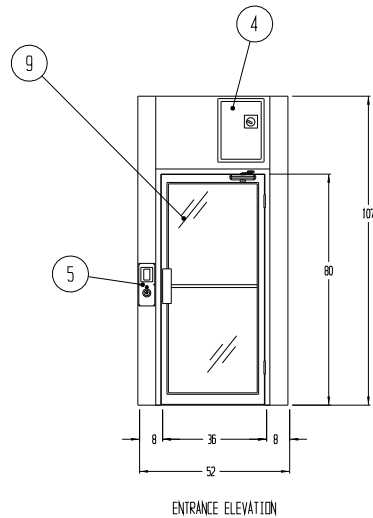
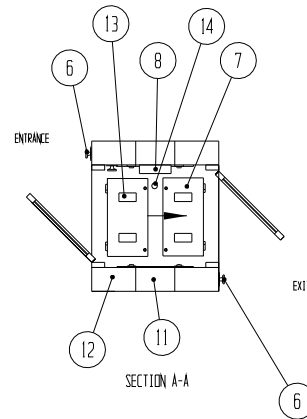
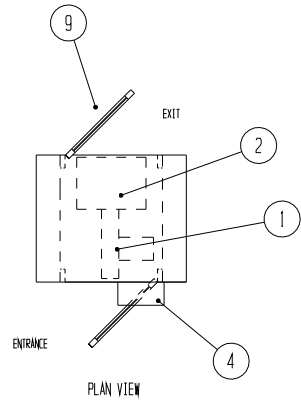


REVISIONS			
REV	DESCRIPTION	DATE	APPROVED



NOTES:

- CONSTRUCTION TO BE 16 GA. TYPE 304 STAINLESS STEEL, #4 POLISH FINISH
- ELECTRICAL WIRING TO CONFORM TO LATEST NEC STANDARDS
- CUSTOMER TO SUPPLY A SINGLE SOURCE 460 VOLT/ 3 PHASE/ 60 HERTZ/ 6.5 AMP TOTAL ELECTRICAL SERVICE
- UNIT TO MEET OR EXCEED ISO 14644-1 (FEDERAL STANDARD 209B AND 209E FOR CLASS 100 DEVICES)
- UNIT TO BE SHIPPED IN THREE PIECES (1 BLOWER SECTION AND 2 WALL SECTIONS W/ DOORS LOOSE)
- NO FLOOR

**IMPORTANT  
CUSTOMER TO CONFIRM:**

- DOOR SIZES AND DIRECTION OF SWING
- ENTRANCE AND EXIT SIDES AND DIRECTION OF OPERATION
- SERVICE ACCESS PANEL LOCATION AND SWING
- AVAILABILITY OF ELECTRICAL SERVICE REQUIRED
- ELECTRICAL SERVICE CONNECTION POINT
- OVERALL SIZE OF UNIT OR SECTIONS
- CLEAR DOOR OPENINGS OF NO LESS THAN 54" WIDE FROM UNLOADING SITE TO INSTALLATION SITE

- ① 1 EA. DIRECT DRIVE MOTOR/BLOWER 3 H.P., 460V, 3 PHASE, 6.5A, CAPABLE OF PRODUCING 1100 CFM AT 4" S.P.
- ② 1 EA. 18 X 24 X 11 1/2 HEPA FILTER. 99.99% EFFICIENT ON PARTICLES OF 0.3 MICRONS AND LARGER
- ③ 2 EA. 24 X 12 X 1" STAINLESS STEEL PRE-FILTER GRILLES WITH 35% EFFICIENT DISPOSABLE PRE-FILTERS
- ④ NEMA 4X SS ELECTRONIC CONTROLS ENCLOSURE, UL LABELED
- ⑤ CONTROL PANEL WITH TOUCH SCREEN INTERFACE AUDIBLE ALARM, AND EMERGENCY STOP BUTTON
- ⑥ 3 EA. EMERGENCY STOP BUTTON
- ⑦ HINGED ACCESS PANELS ON INTERIOR CEILING
- ⑧ ACTIVE INFRARED PRESENCE SENSOR
- ⑨ ANODIZED ALUMINUM NARROW STILE DOORS AND FRAMES WITH 1/4" THK. ACRYLIC INSERTS
- ⑩ 20 EA. HIGH VELOCITY ADJUSTABLE AIR NOZZLES
- ⑪ RETURN AIR DUCTS
- ⑫ SUPPLY AIR DUCTS
- ⑬ 4 EA.LED LIGHT FIXTURES, CAPABLE OF PRODUCING 60 FC AT 40" AFF
- ⑭ SEALED SLEEVE FOR SPRINKLER (PIPE & HEAD BY OTHERS)

(1) UNIT REQUIRED, AS SHOWN

DRAWN FOR		<p style="text-align: center;"><b>HALCO PRODUCTS CO.</b> 100 NO. GORDON STREET ELK GROVE, IL. 60007</p>			
FCA-CHRYSLER-FIAT					
DRAWN BY	TM	SIZE	JOB NO.	DWG NO.	REV
APPROVED BY		SCALE	13162	1017762B0	
			1/4" = 1'	DATE	7-2-13 SHEET