



# HALCO PRODUCTS COMPANY

100 N. Gordon Street - Elk Grove Village, IL 60007-1193

Tel: 847-956-1600 - Fax: 847-956-0595

E-Mail: Info@Halco-Products.com

Website: www.Halco-Products.com

HALCO  
PRODUCT  
INFORMATION

400.6000

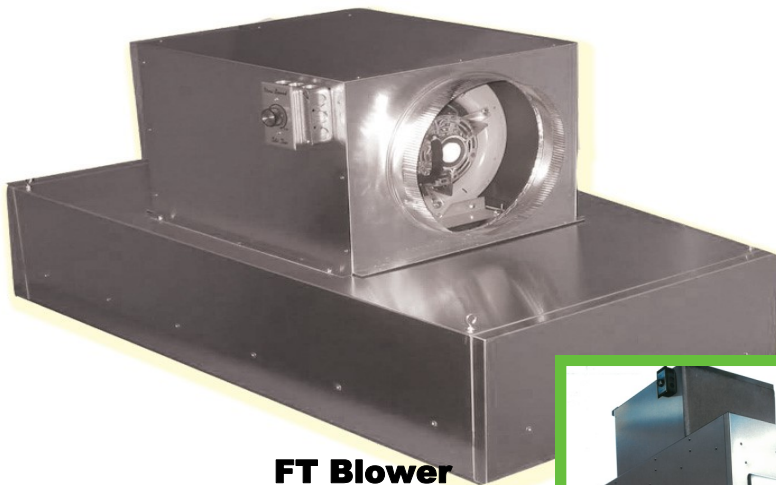
## HEPA FILTER BLOWER MODULES HIGH CAPACITY FT24-MOD

### FOR POSITIVE CLEAN AIR RESULTS

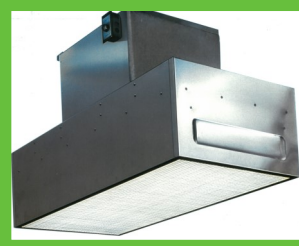
**HALCO** Ceiling Modules fit all standard 2' X 2' and 2' x 4' T-Bar systems. All units are factory sealed and certified, ready for installation. Modules are supplied with a HEPA Filter. Pack sizes 2", 2.75", HEPA and ULPA, gasket or Gel seal. Other sizes available.

#### FT24-M CEILING MODULE

The FT24-M has a self-contained 1/3, 1/2, or 3/4 H.P. direct drive motor blower, standard or ECM. Units may be hung free style or be used to overcome any pressure drop problems which may occur within your existing air system.



**FT Blower  
With Lights Al-  
so Available!**



#### Available Options

- Room Side Accessible Speed Control
- Motor Running Light
- Plugged Power Cord
- Room Side Replaceable Filter
- ULPA Filters
- ECM Motors
- Integrated Centralized Control and Monitoring System
- Insulated Housings
- Dedicated Aerosol Injection Port Room Side Accessible
- Optional Voltages
- Stainless Construction
- Reverse Flow Design
- High Flow / Static Design
- Explosion Resistant Construction

**CONTROL  
PANEL**

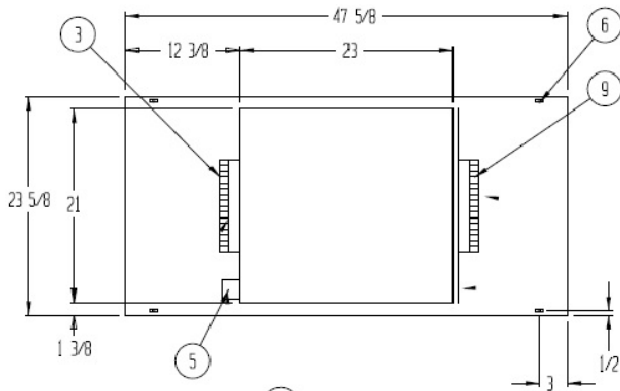
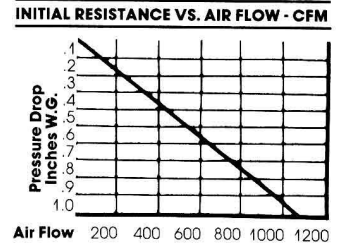


# SPECIFICATIONS

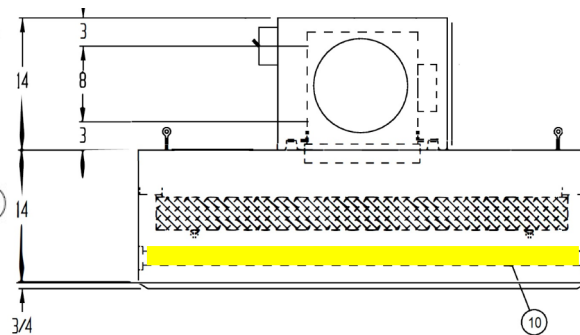
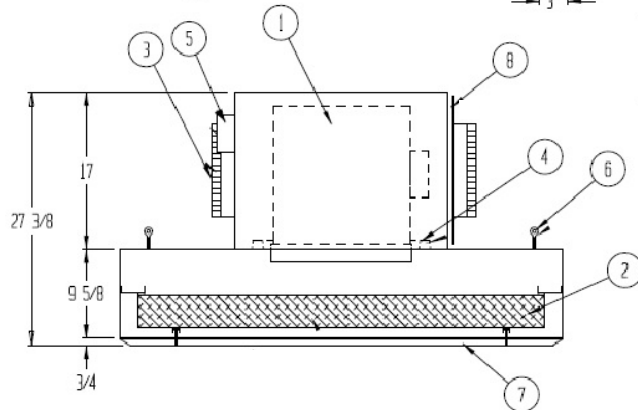


**NOTE:**

- HEPA FILTER REPLACED FROM BELOW WITHOUT DISTURBING CEILING OR HOUSING
- ELECTRICAL WIRING TO CONFORM TO LATEST NEC STANDARDS
- UNIT TO MEET FEDERAL STANDARD 209B AND 209E FOR CLASS 100 DEVICES
- UNIT OPERATING WEIGHT 85 LBS.
- ELECTRICAL REQUIREMENTS: 115 VOLT, 60 HZ., 7.1 FLA
- HOUSING CONSTRUCTED OF 14 GA. 3003-H14 MILL ALUMINUM
- ASSEMBLED WITH INSIDE TURNED FLANGES, CALKED AND BOLTED

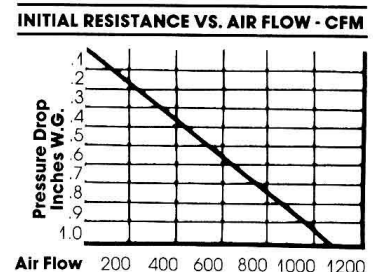
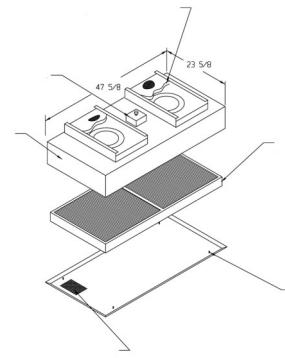
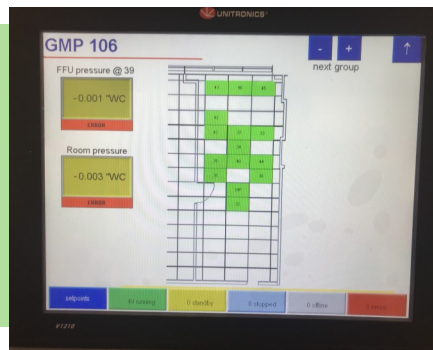
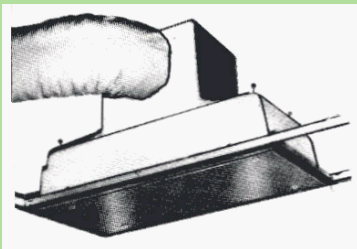


## Optional Lights



- ① 1 EA. 10-10A DIRECT DRIVE BLOWER WITH 1/2 H.P. ECM MOTOR. CAPABLE OF PRODUCING 800 CFM @ .55" INITIAL HEPA FILTER STATIC PRESSURE
- ② 1 EA. 19 3/4 X 43 3/4 X 3 1/2" ANODIZED ALUMINUM FRAMED HEPA FILTER, 99.99% EFFECTIVE ON PARTICLES OF 0.3 MICRONS AND LARGER - GASKET SEAL
- ③ 1 EA. 12" DIA STARTER COLLARS
- ④ 4 EA. MOTOR/BLOWER VIBRATION ISOLATORS
- ⑤ ELECTRONIC SPEED CONTROL
- ⑥ 4 EA. EYEBOLT HANGING SUPPORTS
- ⑦ ANODIZED ALUMINUM PROTECTIVE GRILLE WITH 1/8" DIA. HOLE ON 3/16" STAGGERED CENTERS PROVIDING AN OPEN AREA OF 40%.
- ⑧ MOTOR/BLOWER ACCESS PANEL
- ⑨ 1 EA. 10" DIA STARTER COLLAR

### CONTROL SYSTEM LAYOUT



## HALCO PRODUCTS COMPANY

100 N. Gordon Street - Elk Grove Village, IL 60007-1193  
 Tel: 847-956-1600 - Fax: 847-956-0595  
 E-Mail: Info@Halco-Products.com  
 Website: www.Halco-Products.com