



# HALCO PRODUCTS COMPANY

100 N. Gordon Street - Elk Grove Village, IL 60007-1193

Tel: 847-956-1600 - Fax: 847-956-0595

E-Mail: Info@Halco-Products.com

Website: halco-products.com

HALCO  
PRODUCT  
INFORMATION

300.1001

## CLEANROOM PASS-THRU



Functional pass-thrus are essential for maintaining the integrity and cleanliness of a cleanroom. Pass-thrus allow material to pass into and out of the cleanroom with minimal contamination. Halco™ pass-thrus have many features to ensure functionality and ease of operation. Our pass-thrus have mechanical or electrical interlocks, which ensure that only one door may be open at a time, reducing airborne contamination. Our pass-thrus come in dozens of sizes, materials and finishes, and a variety of additional options, including HEPA filtered and fire rated for state and local codes, ADA compliance, and BSL-3/4 seals.

### Applications

Hospitals  
Bio Containment Labs (BSL-1-4)  
Pharmacies  
Military  
Radioactive Facilities  
Pharmaceuticals Manufacturing  
Cultivation Rooms

### CONSTRUCTION MATERIALS AVAILABLE

- Aluminized steel (ALST)
- Steel (painted or unpainted) (ST)
- Stainless 304/316 steel (SS)
- Plastic (PP)
- Fire rated (FD)

### DOORS:

The doors have a stainless steel frame with tempered safety glass windows, optional amber (gold color) or fire rated available.

### HARDWARE:

Door is hinged and uses stainless steel hinges and latch handle with gasketed seal to ensure no cross-contamination.

### INTERLOCK:

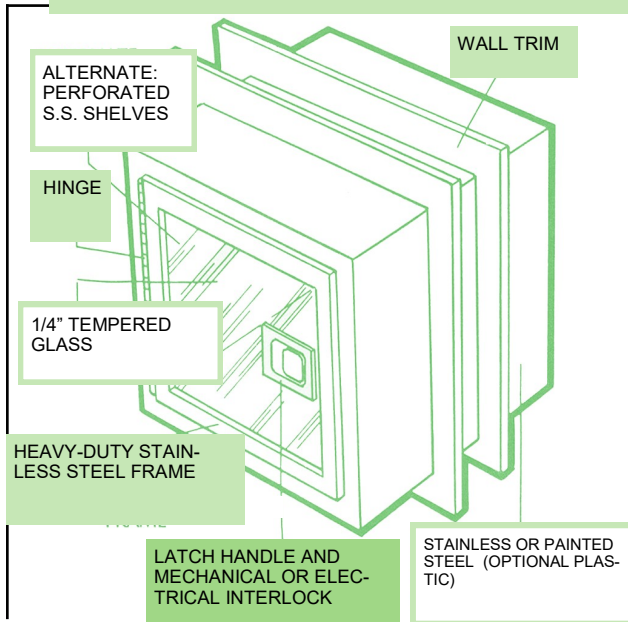
The mechanical or electrically operated interlock system has a specially concealed latch that allows for doors to be opened one at a time. This guarantees the integrity of the clean room.

- Mechanical Interlock (MI)
- Electrical Interlock (EI)

### INSTALLATION:

The pass-thru can be flush mounted to the clean room wall side or centered, inserted into the wall opening and held in place with the stainless steel angle.

# SPECIFICATIONS



## OPTIONS:

- **Fire Rated**
- Programmable logic controller
- Adjustable stainless steel shelves (solid or perforated)
- 304/316 stainless steel laminated interior
- Fluorescent/UV germicidal lights
- Explosion proof
- Talk-thru installed in doors
- Additional doors
- Inert gas purge
- Motorized doors
- Indicator lights
- Roll-up doors
- Door status lights
- Hazardous location
- HEPA filtration
- ULPA filtration
- Aerosol injection port
- Upstream sample port
- Lead lined
- Hanging rod
- Fire door
- Ion static elimination
- L-shaped
- Custom sizes
- Support gussets
- Support legs
- Sloped top
- BMS alarm integration
- Card reader security

## CART PASS-THRU

Dedicated isolation and decontamination when transferring materials in and out of ISO areas

- Auto Doors
- Interlocks
- Floor and Trays
- Safety Glass
- Exhaust Connection
- UV Lighting
- Wall Bumpers
- Amber Glass
- HEPA filtered
- Purge timer (ADJ)
- Challenge port
- DP gauge
- Pilot lights
- Sloped top
- Roll-up doors
- Fire rated

CART PASS-THRUS ALLOW MOVING MATERIALS ROOM TO ROOM AND MINIMIZE CONTAMINATION.



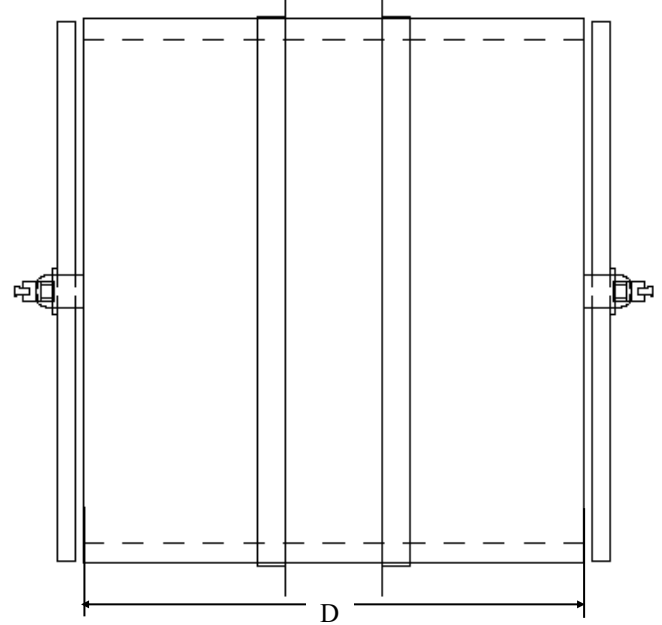
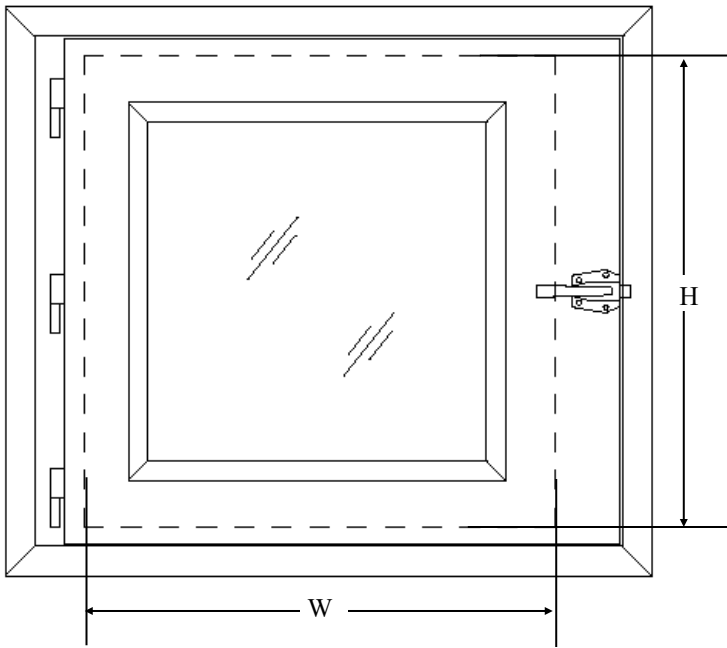
## HALCO PRODUCTS COMPANY

100 N. Gordon Street - Elk Grove Village, IL 60007-1193  
 Tel: 847-956-1600 - Fax: 847-956-0595  
 E-Mail: [Info@Halco-Products.com](mailto:Info@Halco-Products.com)  
 Website: [halco-products.com](http://halco-products.com)

# Standard Pass-Thru Physical Layout Description and Diagram

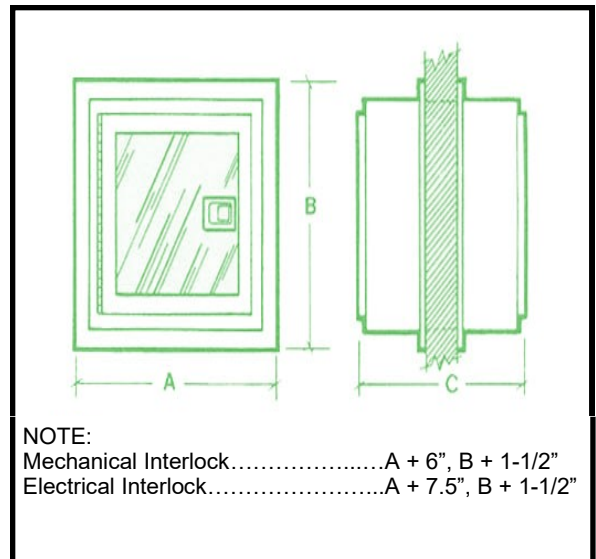
## Halco Pass-Throughs flush- or center-mounted

Halco offers designs for both requirements. Our system mounts flush against the cleanroom wall to eliminate particle accumulation and simplify cleaning. Flush-mount chambers protrude into the “dirty” side room and can be braced, if needed; Halco provides supports for this purpose. Alternatively, chambers can be specified for center-mounting in nearly any wall thickness. Electronic pass-throughs can even be specified with access doors on adjacent corner walls.

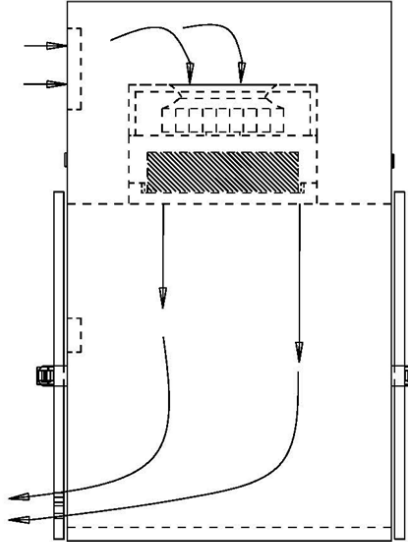


Inside Dimensions			
Model No.	W	H	D
PT1212-13	12"	12"	13"
PT1818-18	18"	18"	18"
PT2424-24	24"	24"	24"
PT2430-24	24"	30"	24"
PT3024-24	30"	24"	24"
PT3030-30	30"	30"	30"
PT3636-36	36"	36"	36"

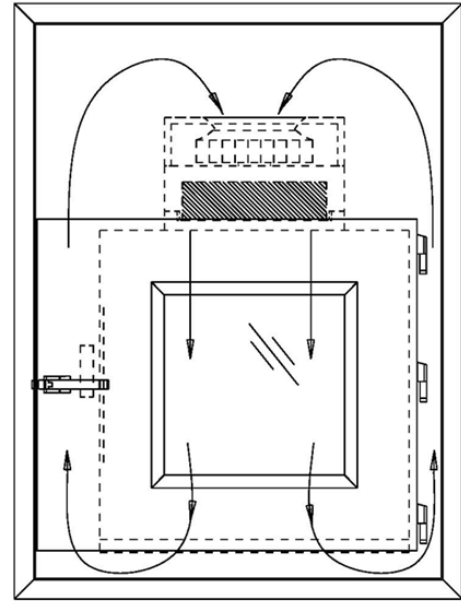
*\*Other sizes available upon request*



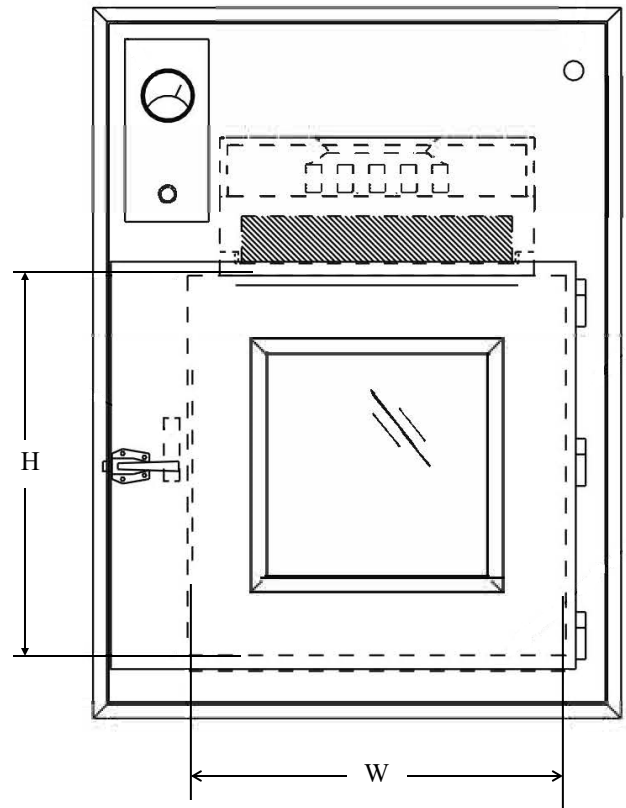
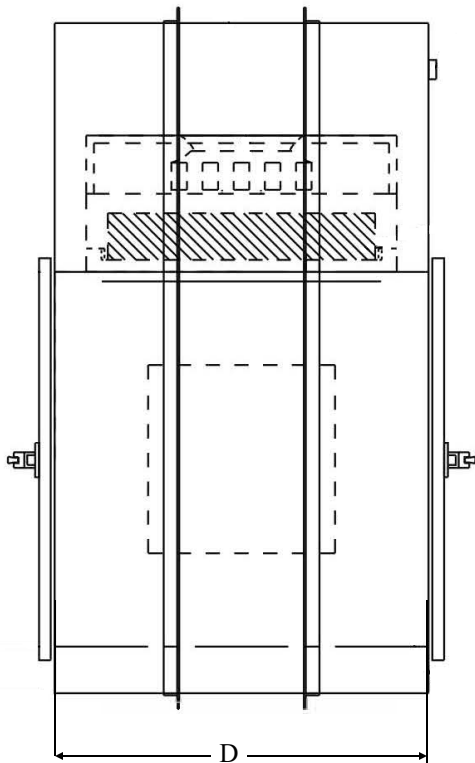
# HEPA Filtered Pass-Thru Physical Layout Description and Diagram



SINGLE PASS HEPA FILTRATION  
(FAN RUNS CONTINUOUSLY)



RECIRCULATING HEPA FILTRATION  
(FAN ON AN ADJUSTABLE TIMER)



# Hepa Filtered Styles

## 100% Recirculated



These pass-through blower modules have RECIRCULATED air flow within the module to provide ISO rated cleanliness.

We can provide options for removable shelves or base sections for serviceability.

All of our pass-throughs are interlocked so only one door opens at any given time.

## Single Pass



## Ducted



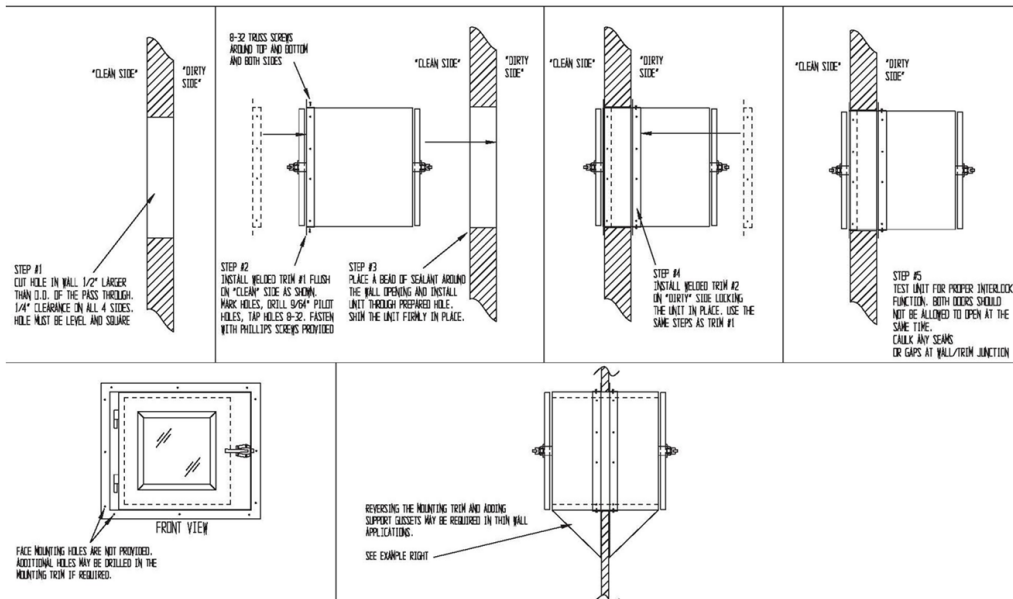
# Typical Install Detail

## PASS THROUGH INSTALLATION INSTRUCTIONS

### TOOLS REQUIRED:

LEVEL, SQUARE, CORLESS DRILL  
PHILLIPS SCREWDRIVER, 9/64 DRILL BIT, 8-32 TAP  
CAULKING GUN, SEALANT OR CAULKING

RECOMMENDED PASS THROUGH INSTALLATION INSTRUCTIONS ARE SHOWN BELOW. PASS THROUGH MAY BE CENTERED IN THE WALL TO PROTRUDE EQUALLY ON BOTH SIDES, CUSTOMER/INSTALLER PREFERENCE.  
(NOTE: TRIMS ARE FULLY WELDED AND POLISHED ON BOTH SIDES TO ACCOMMODATE ANY TYPE OF INSTALLATION)



# BSL Rated Pass Throughs



- Inflatable door seals
- Access ports for sterilization
- Positive interlock system
- Viewing windows
- HEPA filtration and ventilation

Customized specifications upon request.  
Please contact our office for details.

**Halco Products Company, Inc.**

**Halco**™

100 Gordon St. Elk Grove Village, IL 60007-1193

Ph: 847-956-1600 F: 847-956-0595

[info@halco-products.com](mailto:info@halco-products.com)

[www.halco-products.com](http://www.halco-products.com)